



# T1200 AIR TANK

## ASSEMBLY AND PARTS MANUAL



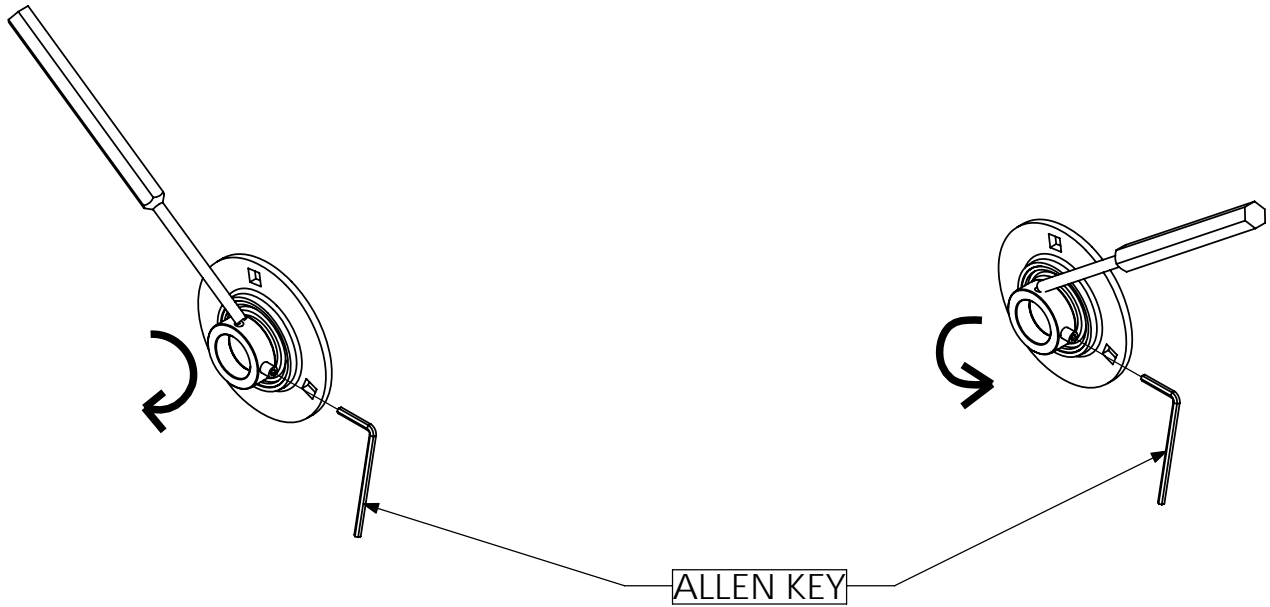
# TABLE OF CONTENTS

Bearing locking collar tightening instructions .....	1
U-bolt tightening and torque recommendations .....	2
<b>Tongue</b>	
Safety chain installation .....	3
Tongue installation.....	4
<b>Frame components and axle assembly</b>	
Rear axle installation .....	6
Front axle assembly.....	8
Spindle and hub assembly.....	10
Rail installation.....	12
Lid assembly.....	14
Lid and screen installation .....	16
Rem fan installation .....	18
Crarry fan installation.....	20
Case drain information.....	21
<b>Wiring</b>	
Light and clutch diagram.....	22
Relay wiring instructions .....	23
<b>Loading auger</b>	
Hopper and valve installation.....	25
Loading auger installation .....	26
Loading auger arm assembly.....	28
<b>Drive components assembly and installation</b>	
Roller meter drive installation.....	30
Auger meter drive installation .....	34
Roller meter box installation.....	36
Auger meter installation .....	37
Variable speed drive assembly .....	38
Roller meter chain routing.....	40
Auger meter chain routing.....	41
Variable speed meter box assembly installation .....	42
<b>Sensor installation</b>	
Fan and shaft sensor installation .....	43
<b>Hydraulics and air hose routing</b>	
Hydraulic hose layout and valve installation .....	44
Hydraulic fitting description .....	46
<b>Air hose distribution</b>	
Air hose routing.....	47

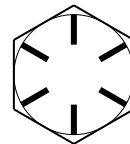
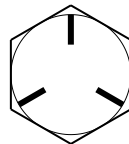
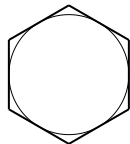
# Procedures for tightening and loosening locking collar

**tighten**  
1. tighten collar with punch and hammer  
2. tighten set screw with allen key

**loosen**  
1. loosen set screw with allen key  
2. loosen collar with hammer and punch



6\$/) 25' 5( &200(1' (' 72548( 9\$/8(6



%2 / 7 6,=(	* 5\$' (		* 5\$' (		* 5\$' (	
	IMØV	1 P	IMØV	1 P	IMØV	1 P
1 &						
1 &						
1 &						
1 &						
1 &						

1 2 7 ( 6 7 KHM UFRP P HGGH VRTXH YDØH V DUH DSSØFDEØI Z KHQ DSSØHG V R WH QXW  
 RQØ 7 KHM UFRP P HGGH VRTXH YDØH V DUH DSSØR IP DM RQØ 7 KH VRTXH WQMRQ  
 UHØMRQ KIS LV DIHF WGE ØEUFDMRQ VXUDFH ILQVK WUHDG ILVSDØQJ ØFN Z DVKHU/ HMF

' 2 1 2 7 XH VHMH YDØH V IL D GLIHUHQ VRTXH YDØH RUM KMQQ SURFHGXUH LV JLYHQ IRU  
 D VSHFLLF DSSØFDMRQ 7 RUTXH YDØH V DMG DUH IRUJ HGHUØXVH RQØ & KHFN WVKØH V RI  
 IDWØHU/ SHURGFØØ

6 KHØUERØV DUH GMLJQH VRI DØXGGHUSUHG HMP LQH GØDGV \$ Ø D V UHSDØFH VKHØUERØV  
 Z LV LGHØMØDØJ UDGH

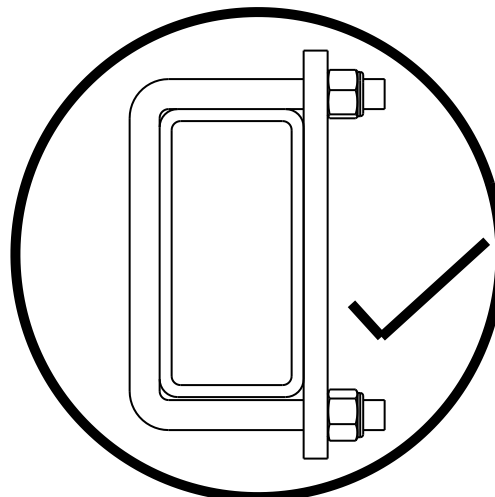
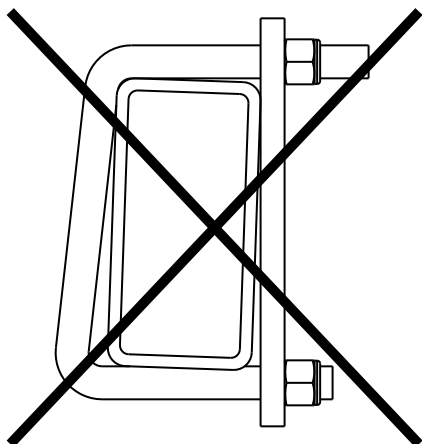
) DMØHU/ VØRØØ EH UHSDØFH Z LV WH VDP H RUKJ KHUJ UDGH , I KJ KHUJ UDGH IDWØHU/  
 DUH XHGH WHMH VØRØØ RQØ EH W KMGHG VRI WH WØHQ VRI WH RUJ LQØØ

Ø DNH VXUH IDWØHU/ WUHDG/ DUH FØDQ DQG WDW RX SURSHØ WDUWUHDG HQJ DJ HP HQW  
 7 KLV Z LØSUHYHQWHP IURP IDØØ Z KHQ W KMQQ

: \$51,1\*

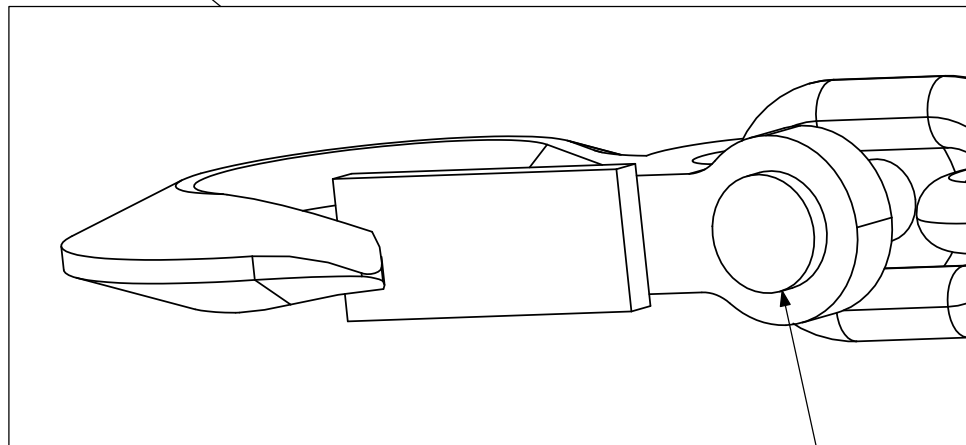
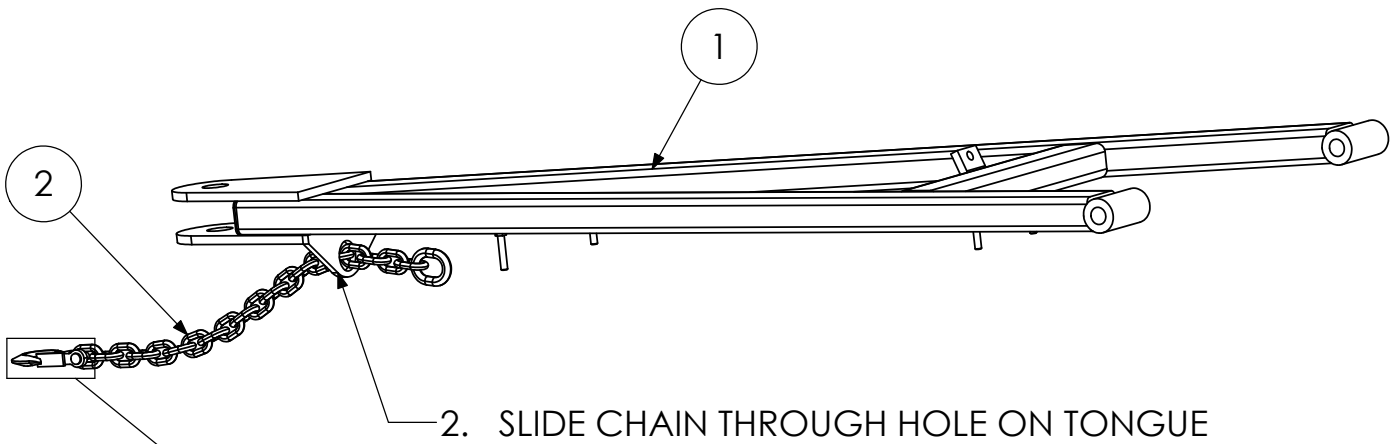
' R ØR W KMQRQH VGH RI WH  
 X ØRØH RUH WH R W HMGH

%ØR VGH VRI WH X ØRØV  
 P XWØH W KMGHG HTXØØ



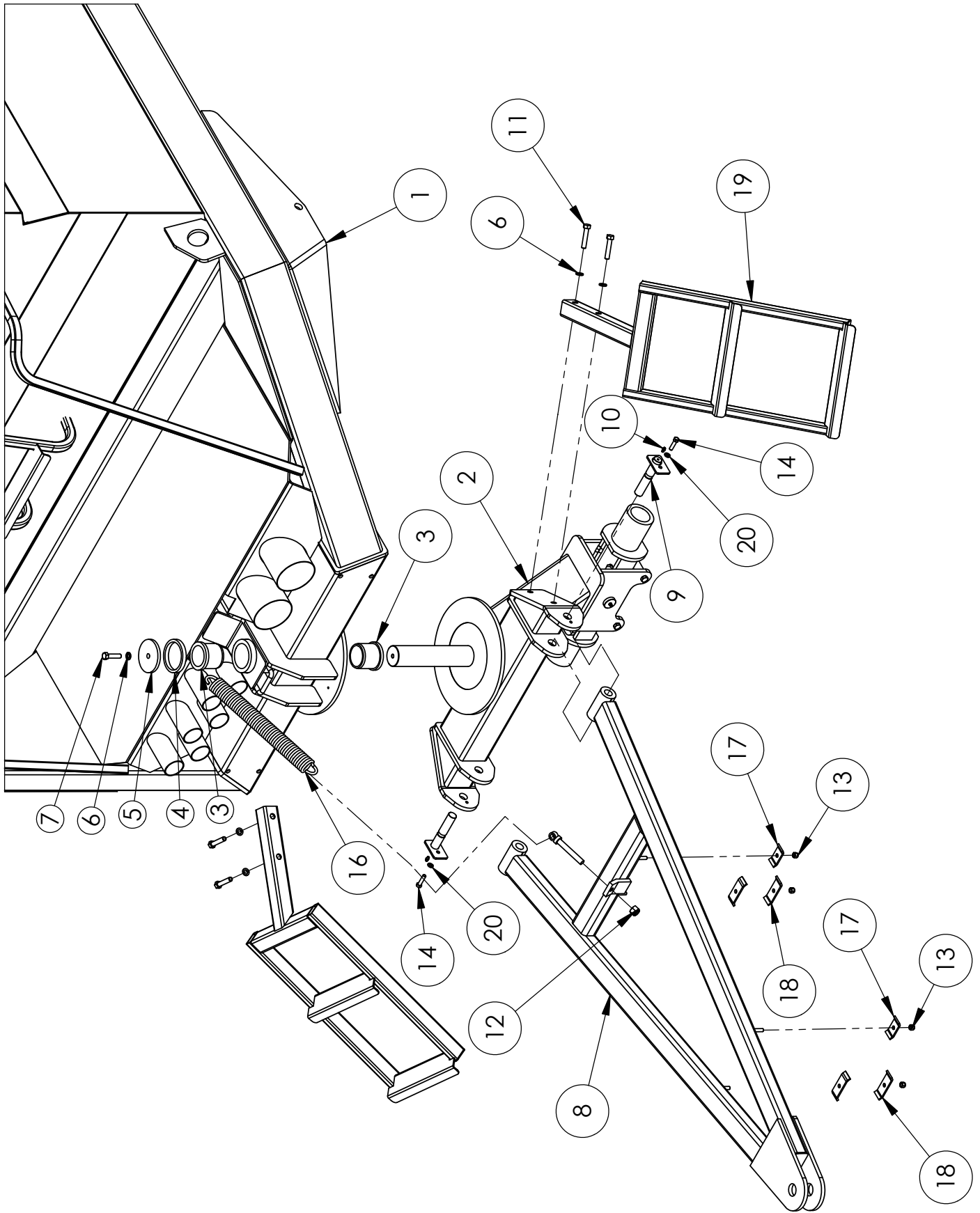
## SAFETY CHAIN INSTALLATION

ITEM NO.	QTY.	PART NO.	DESCRIPTION
1	1	T12190	AIR TANK TONGUE
2	1	GJ652027	20,000 LB SAFETY CHAIN



1. REMOVE PIN AND HOOK
3. REINSTALL PIN AND HOOK.

**FRONT TONGUE AND CASTER INSTALLATION**



## FRONT TONGUE AND CASTER ASSEMBLY

ITEM NO.	QTY.	PART NO.	DESCRIPTION
1	1	T12500	TANK WELDMENT
2	1	T12170	FRONT TANK CASTER WHEEL
3	2	T12184A	FRONT CASTER NYLATRON BUSHING
4	1	T12185	CASTER WHEEL SPACER
5	1	T12186	AIR TANK CASTER WHEEL SUPPORT
6	5	BL08	1/2" SPRING WASHER
7	1	B0820	1/2"NC x 2" LG. HEX BOLT
8	1	T12190	AIR TANK TONGUE
9	2	T12210	TONGUE PIN
10	2	GF3014	1/4 " GREASE FITTING
11	4	B0830	1/2" x 3" HEX BOLT
12	1	BN10L	5/8" NYLOCK NUT NC
13	4	BN06L	3/8"-16NC LOCK NUT
14	2	B0615-B	3/8 X 1 1/2" BOLT
15	1	T12943	SPRING RETAINER
16	1	GSE0518	5/16 x 18" 2 HOOK SPRING
17	2	P0160A	HOSE CLAMP 3"
18	4	P0160B	HOSE CLAMP 4"
19	2	T12580A	FRONT LOWER LADDER
20	2	BL06	3/8" LOCK WASHER

1. MOUNT TANK (1) ON 4 STANDS OR HANG FROM OVERHEAD SECURELY, SLIDE NYLATRON BUSHING (3) ON CASTER WHEEL SHAFT (2), SLIDE CASTER WHEEL WELDMENT INTO CASTER SLEEVE ON TANK, SLIDE OTHER NYLATRON BUSHING (3) ON OTHER END OF CASTER WHEEL (TOP) AND FIT CASTER WHEEL SPACER (4) OVER NYLATRON BUSHING (3), ALIGN CAP (5) WITH THREADED HOLE ON CASTER WHEEL SHAFT, RETAIN WITH BOLT (7)WASHER (6) AND TIGHTEN SECURELY REPEAT STEPS FOR OTHER BOLT.
2. ALIGN TONGUE (8) WITH HOLES ON CASTER WHEEL (2) AND SLIDE PIN (9) IN HOLES, REPEAT STEPS FOR OTHER SIDE, AND RETAIN WITH BOLTS (14) AND WASHERS (20) TIGHTEN SECURELY.
3. LOOP SPRING RETAINER (15) OVER ONE END OF SPRING HOOK (16), LOOP OTHER END OF SPRING (16) ON ROD WELDED ON TANK (1), SLIDE SPRING RETAINER BOLT (15) THROUGH HOLE ON TONGUE, RETAIN WITH 5/8" LOCK NUT (12), AND SET DESIRED TENSION.
4. SLIDE HOSE CLAMPS (17-18), ON BOLTS ON TONGUE AND RETAIN WITH 3/8" LOCKNUTS, DO NOT TIGHTEN AT THIS TIME.
5. IINSTALL LADDER(19), RETAIN WITH 1/2 X 3" BOLTS(11).



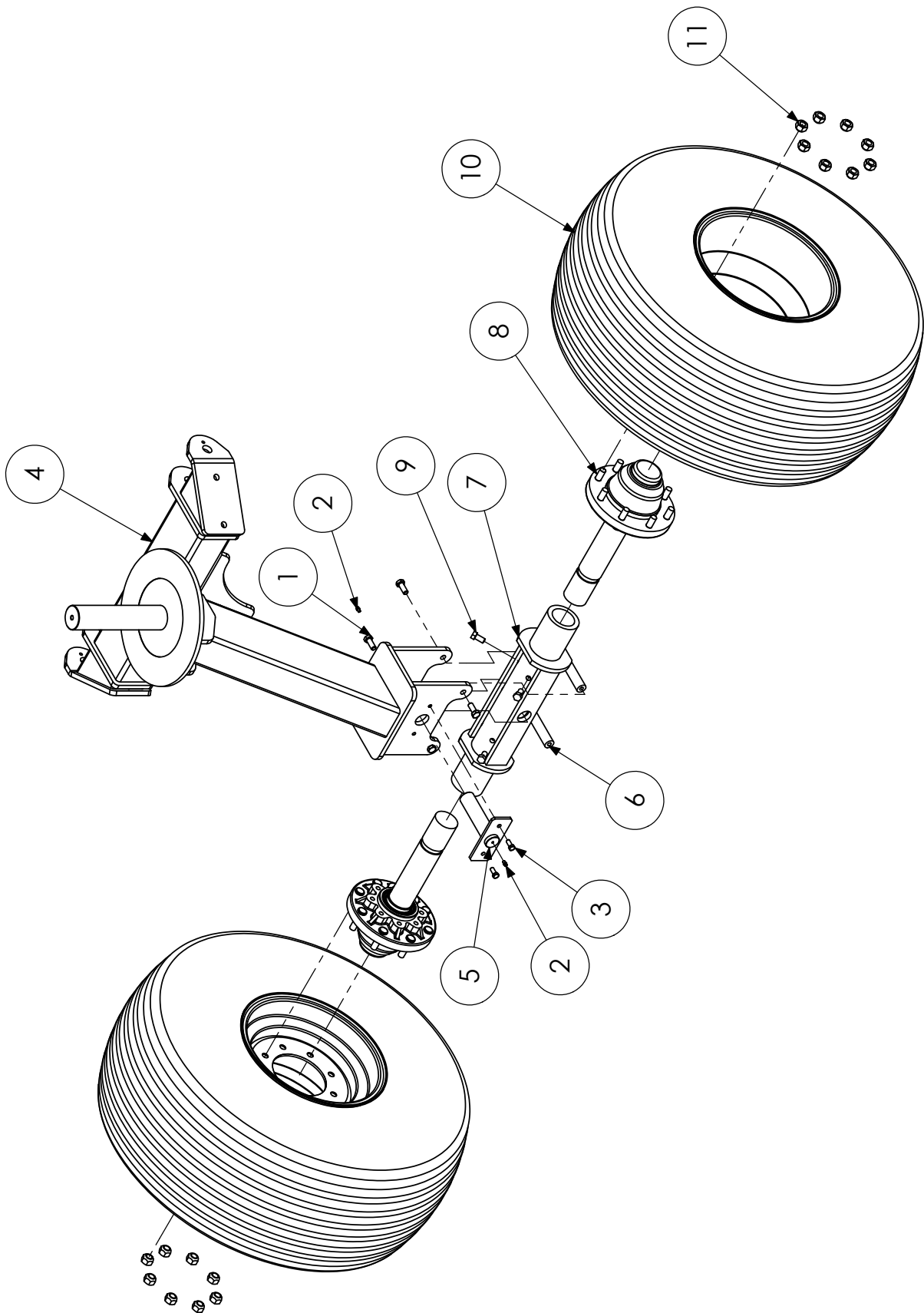


## REAR AXLE INSTALLATION

ITEM NO.	QTY.	PART NO.	DESCRIPTION
1	1	T12500	TANK WELDMENT
2	1	T12130	REAR TANK AXLE
3	8	B1220	3/4 X 2" PLATED BOLT GR.5
4	8	BN12L	3/4" NC NYLOCK NUT
5	2	GW8000	8000 HUB ASSEMBLY
6	2	B0815	1/2 X 1 1/2" GR. 5 PLATED BOLT
7	2	GW23268	REAR TANK TIRE
8	16	BW10	5/8" WHEEL LUG NUT
9	1	50BS40	#50 BS 40 TOOTH SPROCKET
10	4	B0812F	1/2 X 1 1/4" NF HEX BOLT

1. MOUNT TANK (1) ON 4 STANDS SECURELY OR HANG FROM OVERHEAD, LINE AXLE WELDMENT (2) UP WITH MOUNTING PLATES ON TANK AND RETAIN WITH 3/4 X 2" BOLT(3) FASTEN NUT (4) AND TIGHTEN, REPEAT STEPS FOR ALL 8 BOLTS.
2. SLIDE 8000 HUB ASSEMBLY (5) ON RIGHT SIDE INTO AXLE SLEEVE (2) ALIGN GROOVE IN THE HUB WITH HOLE IN SLEEVE AND RETAIN WITH BOLT (6) AND TIGHTEN, AND ON LEFT SIDE INSTALL SPROCKET (50BS40) ON HUB ASSEMBLY WITH BOLTS PROVIDED (10)(IF NOT ALREADY INSTALLED) AND TIGHTEN, SLIDE HUB ASSEMBLY INTO AXLE SLEEVE, ALIGN GROOVE ON SPINDLE WITH HOLE IN SLEEVE AND TIGHTEN BOLT (6).
3. ALIGN TIRE (7) ON HUB (5) ASSURING HOLES LINE UP WITH LUG BOLTS IN HUB TO AVOID DAMAGING THREAD, SLIDE TIRE ON HUB AND ATTACH ALL LUG NUTS (8) AND TIGHTEN ACCORDING TO TORQUE SPECIFICATIONS.
4. **note: do not attach tire before installing drive shaft and bearings on rear axle.**

# FRONT CASTER AND AXLE ASSEMBLY



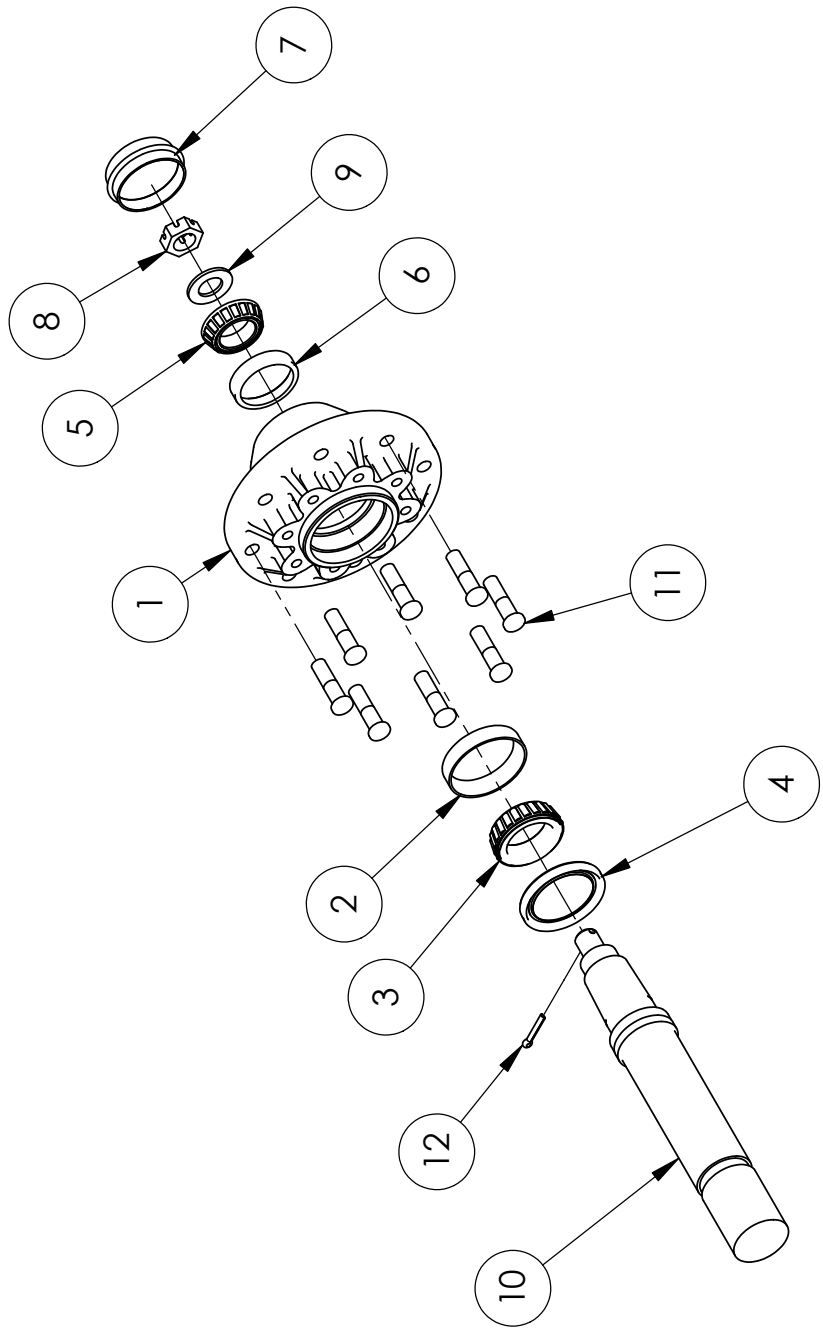
## FRONT CASTER AND AXLE ASSEMBLY

ITEM NO.	QTY.	PART NO.	DESCRIPTION
1	4	B0812	1/2 x 1 1/4" BOLT
2	2	GF3014	1/4 " GREASE FITTING
3	2	B0610	3/8 X 1" BOLT
4	1	T12870	FRONT TANK CASTER WHEEL FRAME
5	1	T12310	FRONT AXLE PIN
6	2	T12312	FRONT AXLE STOPPER
7	1	T12350	FRONT AXLE ROCKER
8	2	GW8000	8000 HUB ASSEMBLY
9	4	B0810	1/2" x 1" HEX BOLT
10	2	GW16106	FRONT TANK TIRE
11	16	BW10	5/8" WHEEL LUG NUT

1. Install front axle rocker (7) into caster wheel frame (4) and retain with front axle pin (5) and tighten with 3/8 x 1" bolts, insert grease fitting.
2. Install axle stoppers (6) and retain with 1/2 x 1" bolts.
3. Install 8000 hub assembly (8) and align groove in spindle with holes on sleeve and retain with 1/2 x 1 1/4" bolts (1).
4. Install tires (10) on hubs (8) and tighten with 5/8" (11) wheel lug nuts.

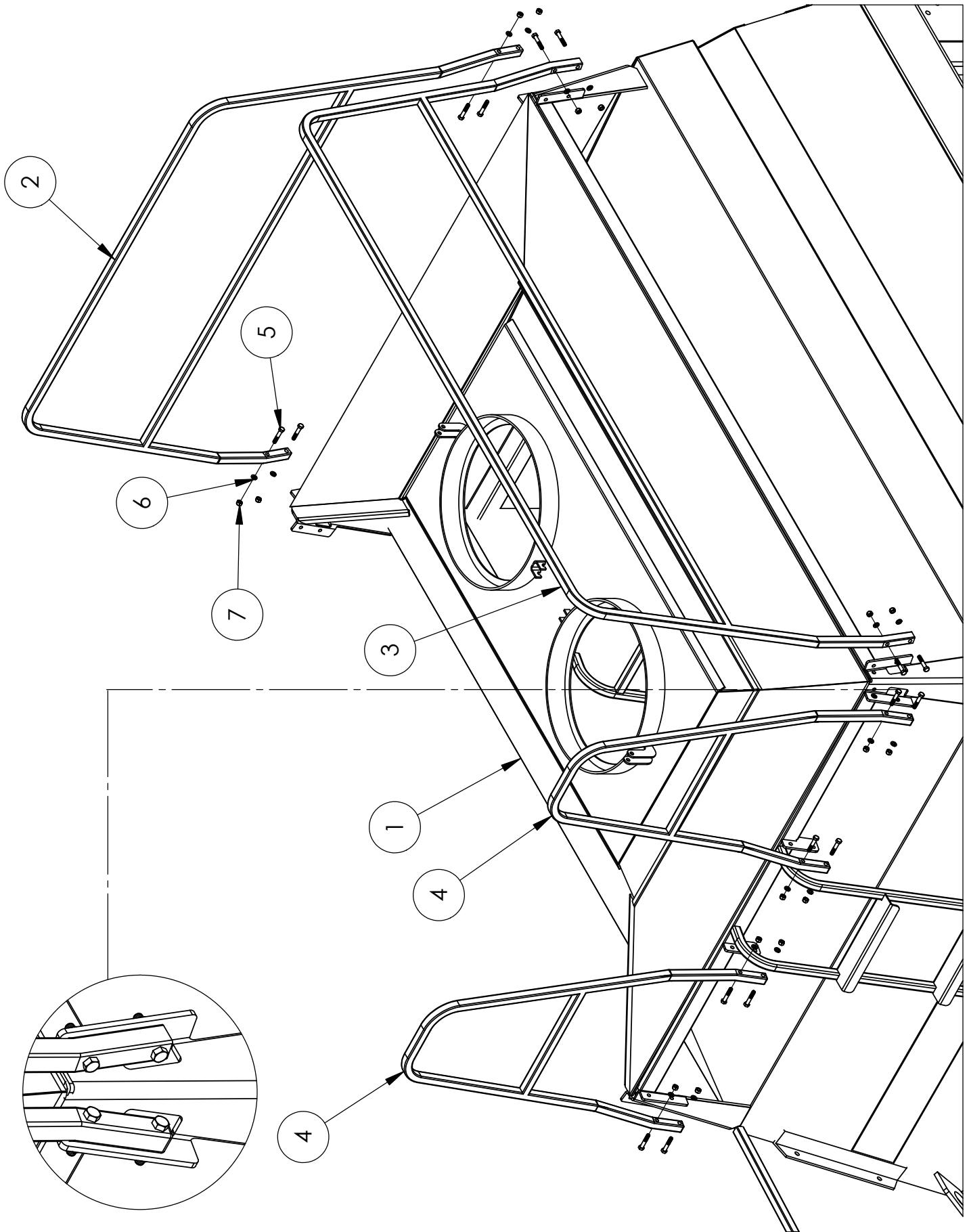
# 8000 LB HUB ASSEMBLY

ITEM NO.	QTY.	PART NO.	DESCRIPTION
1	1	8000HUB	8000 HUB
2	1	GB506810	8000 INNER CUP
3	1	GB506849	8000 INNER CONE
4	1	GW8110	8000 SEAL
5	1	GB511349	8000 OUTER CONE
6	1	GB501310	8000 OUTER CUP
7	1	GW8112	8000 DUST CAP
8	1	BN16S	1" SLOTTED JAM NUT
9	1	BF16S	1" SAE WASHER
10	1	GW8018-MK	AIR SEEDER TANK AXLE
11	8	BW1020	5/8" x 2" PRESS-IN WHEEL STUD
12	1	BSC0415	1/4" x 1 1/2" COTTER PIN





# RAIL INSTALLATION INSTRUCTIONS

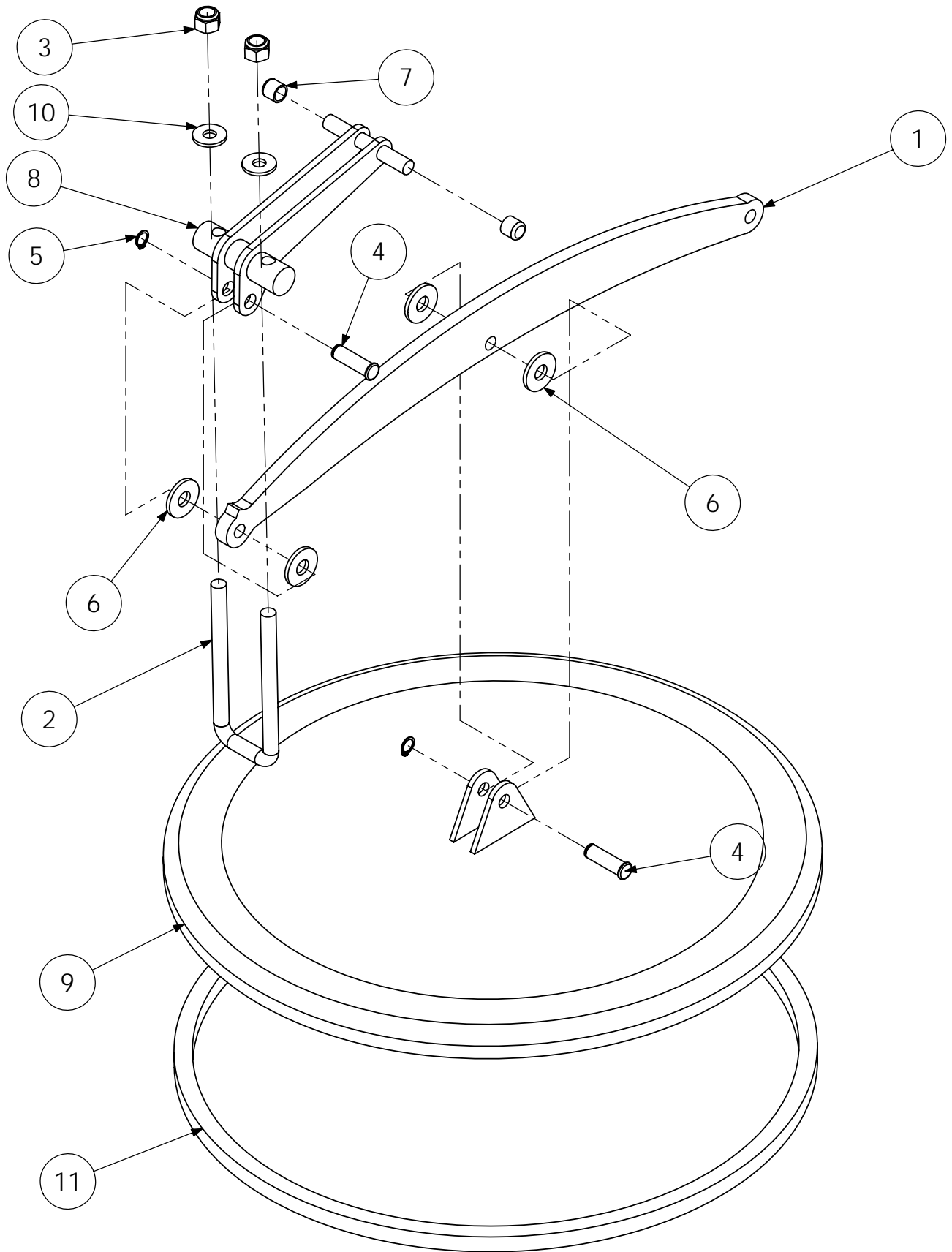


## RAIL INSTALLATION INSTRUCTIONS

ITEM NO.	QTY.	PART NO.	DESCRIPTION
1	1	T12500	TANK WELDMENT
2	1	T12720	REAR RAIL
3	1	T12730	SIDE RAIL
4	2	T12710	FRONT TOP RAIL
5	16	B0620	3/8" X 2" LG. GRADE 5
6	18	BL06	3/8" LOCK WASHER
7	16	BN06L	3/8 " LOCKNUT

USE 3/8" X 2" BOLTS, AND 3/8" NUTS AND 3/8" LOCKWASHERS AS SHOWN IN PICTURE.

# LID ASSEMBLY INSRUCTIONS

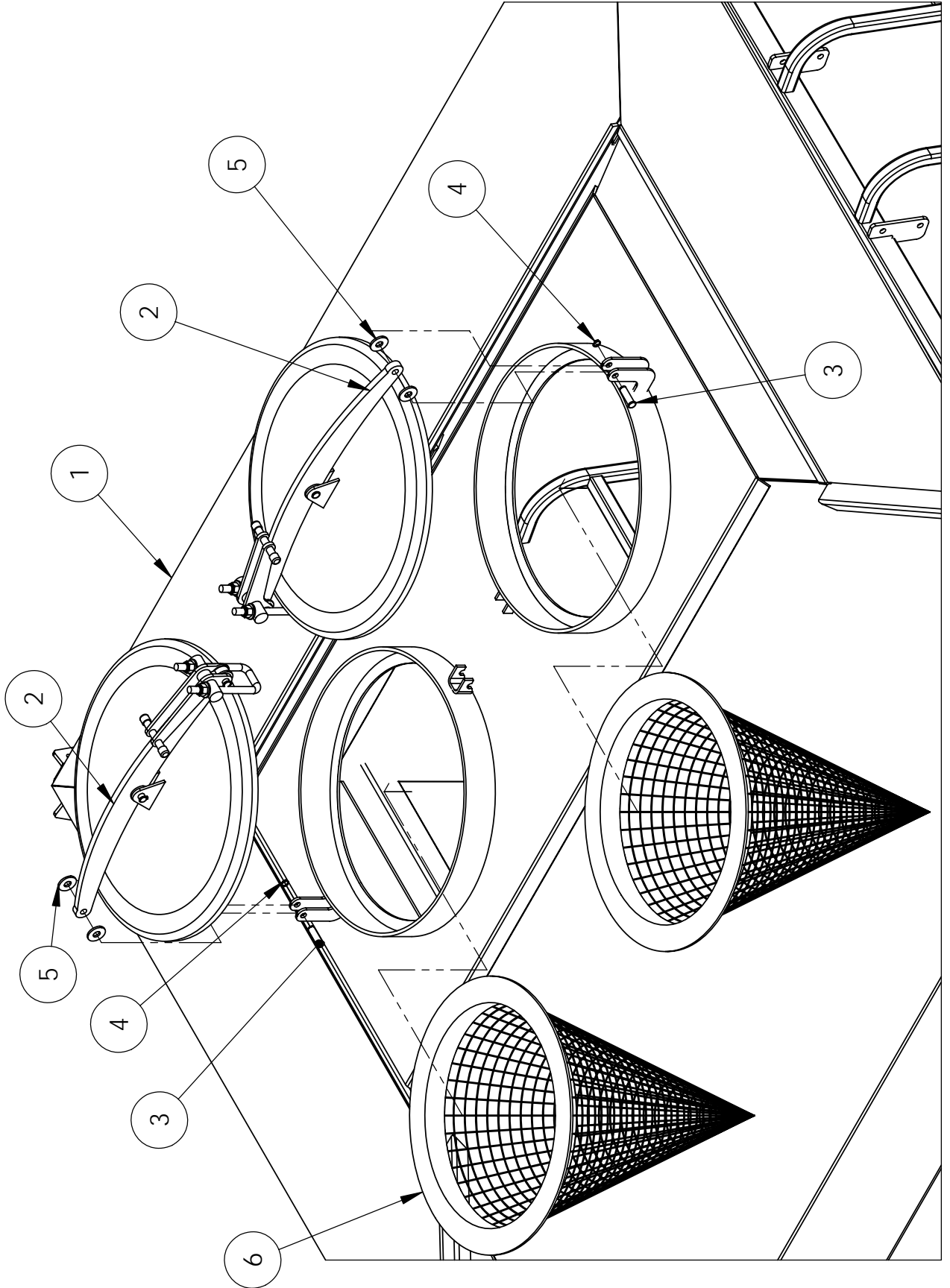




## LID ASSEMBLY INSRUCTIONS

ITEM NO.	QTY.	PART NO.	DESCRIPTION
1	1	T12893	ROUND LID RETAINER
2	1	T12906	LID U-BOLT
3	2	BN08L	1/2" NYLOCK NUT NC
4	2	T12925	12 X 40 MM PIN
5	2	BR3100-043	12 MM SNAP RETAINING RING
6	4	BF12MM	12 MM WASHER
7	2	T12926	HANDLE COVER
8	1	T12927	ROUND LID HANDLE
9	1	T12928	ROUNG LID WELDMENT
10	2	BF12MM	12MM FLAT WASHER
11	1	T12944	15MM SQUARE ROUND LID SEAL

# LID AND SCREEN INSTALLATION

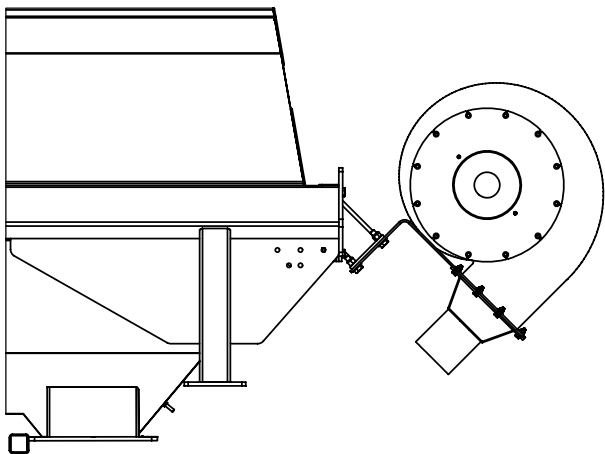
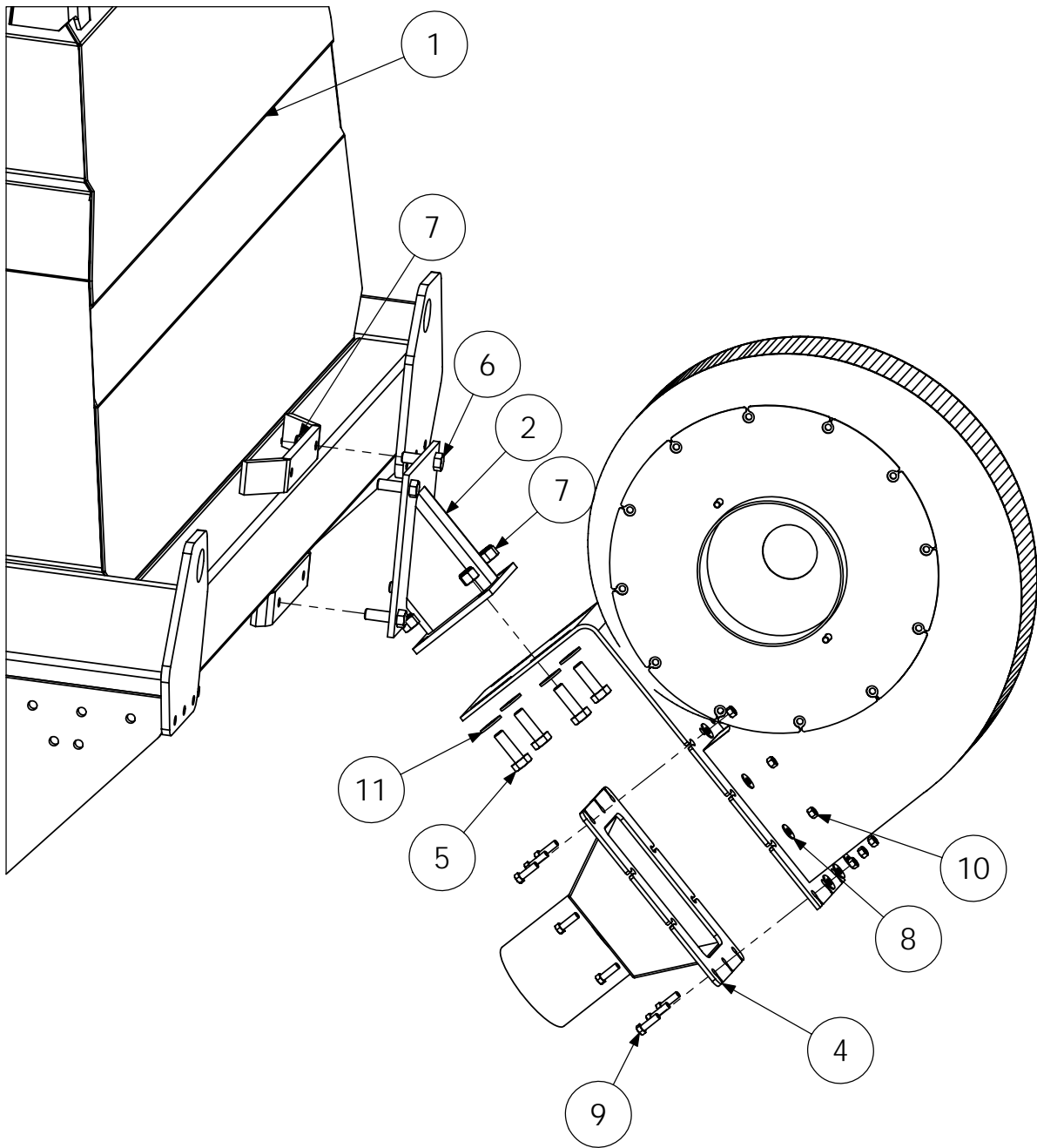


## LID AND SCREEN INSTALLATION

ITEM NO.	QTY.	PART NO.	DESCRIPTION
1	1	T12500	TANK WELDMENT
2	2	T12899	TANK ROUND LID ASSEMBLY
3	2	T12925	12 X 40 MM PIN
4	2	BR3100-043	12 MM SNAP RETAINING RING
5	4	BF12MM	12 MM SPACER WASHER
6	2	T00369	ROUND LID WIRE MESH SCREEN

1. LINE LID ASSEMBLY (2) UP WITH LID HINGES ON TANK (1) AND PUT 1 WASHER (5) ON EACH SIDE OF LID ASSEMBLY (2), SLIDE 12 X 40 MM PIN (3) THROUGH HINGES AND WASHERS AND SECURE WITH SNAP RING (4).

# REM FAN INSTALLATION



## REM FAN INSTALLATION

ITEM NO.	QTY.	PART NO.	DESCRIPTION
1	1	T12500	TANK WELDMENT
2	1	T00361	REM FAN MOUNTING BRACKET
3	1	T00354	17" REM FAN
4	1	T00362	REM FAN 6" HOSE ADAPTER
5	4	B1020	5/8"NC x 2" HEX BOLT
6	4	B1020	5/8 X 2" BOLT GR. 5 PLATED
7	8	BN10L	5/8" NYLOCK NUT NC
8	9	BF06	3/8" FLATWASHER
9	10	B0612	3/8 x 1 1/4" BOLT
10	9	BN06L	3/8 " LOCKNUT
11	4	BF10HS	5/8" FLAT WASHER

1. LINE FAN BRACKET MOUNT (2)UP WITH PLATES ON TANK( AND RETAIN IN PLACE WITH 5/8 X 2" BOLTS (5) AND 5/8" LOCKNUTS (6), ONCE ALL BOLTS ARE IN PLACE TIGHTEN SECURELY.
2. ALIGN FAN (3)WITH MOUNTING BRACKET (2) AND RETAIN IN PLACE WITH 5/8 X 2" BOLTS (5), 5/8" FLAT WASHERS (11), 5/8" LOCKNUTS (7) AND POSITION SLOTTED HOLES ON FAN TO CENTER OF HOLES ON MOUNTING BRACKET, THEN TIGHTEN SECURELY IN PLACE.
3. PUT SILICONE ON 6" HOSE ADAPTER BETWEEN FAN AND ADAPTER, THEN FASTEN WITH 3/8 X 1 1/4" BOLTS (8), AND 3/8" WASHERS (7), AND 3/8" NUTS (9).

## CRARY FAN INSTALLATION



Use 4 - 5/8" x 2" bolts and 5/8" locknuts as shown



Install hydraulic hoses as shown in hydraulic schematic in further pages.

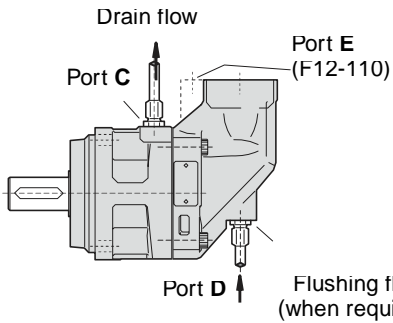


Install air hose reducer onto axle beam as shown  
With 5/8" x 4 x 7 1/2" u-bolts and 5/8" locknuts



Route sensor cable in channel with hoses and  
use straps to keep wire from interfering with fan

# CASE DRAIN INFORMATION

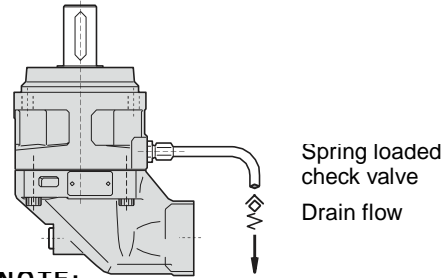


## Hydraulic motor/pump Series F11/F12

### Case drain connections

Series F11/F12 have two drain ports, **C** and **D**, while F12-110 has an additional port, **E**.

The uppermost drain port (such as port C in the illustration below) should always be utilized.



In mounting positions such as 'shaft up' (below) a spring loaded check valve should be installed in the drain line in order to insure a sufficiently high oil level in the case.

Preferably, the drain line should be connected directly to the reservoir.

### Before start-up

Make sure the F11/F12 case as well as the entire hydraulic system is filled with a recommended fluid. The internal leakage, especially at low operating pressures, is not sufficient to provide lubrication at start-up.

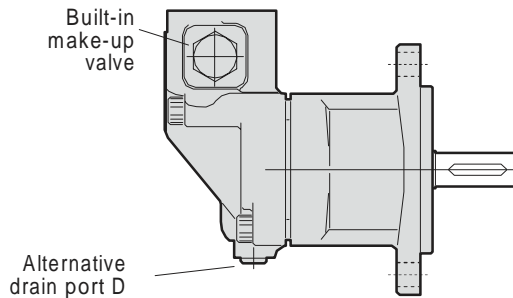
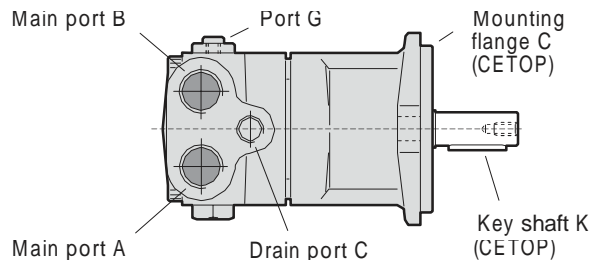
### NOTE:

- To avoid cavitation and obtain a low noise level as well as reduced heat generation, tubes, hoses and fittings must be adequately dimensioned.
- Preferably, the suction line flow speed should be 1.5 to 3.5 fps (0.5 to 1 m/s), and pressure line flow speeds 10 to 16 fps (3 to 5 m/s).
- For series F12, suitable suction fittings are available (refer to page 39).

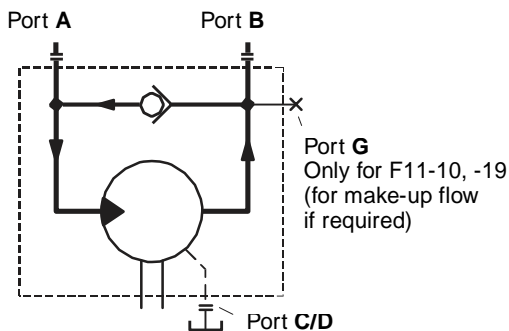
## F11 fan motors Technical information

Frame sizes -10, -14 and -19 are also available as 'fan motors' with a built-in check valve (refer to the schematic below) and CETOP mounting flange. Just like the saw motor, the fan motor can be operated at very high speeds without reliability problems. The fan is usually installed directly on the motor shaft without additional bearing support.

Additional information (available versions, ordering codes, installation dimensions, etc.) is available in publication 'F11 Fan Motors' (catalogue 9129 8247-02).

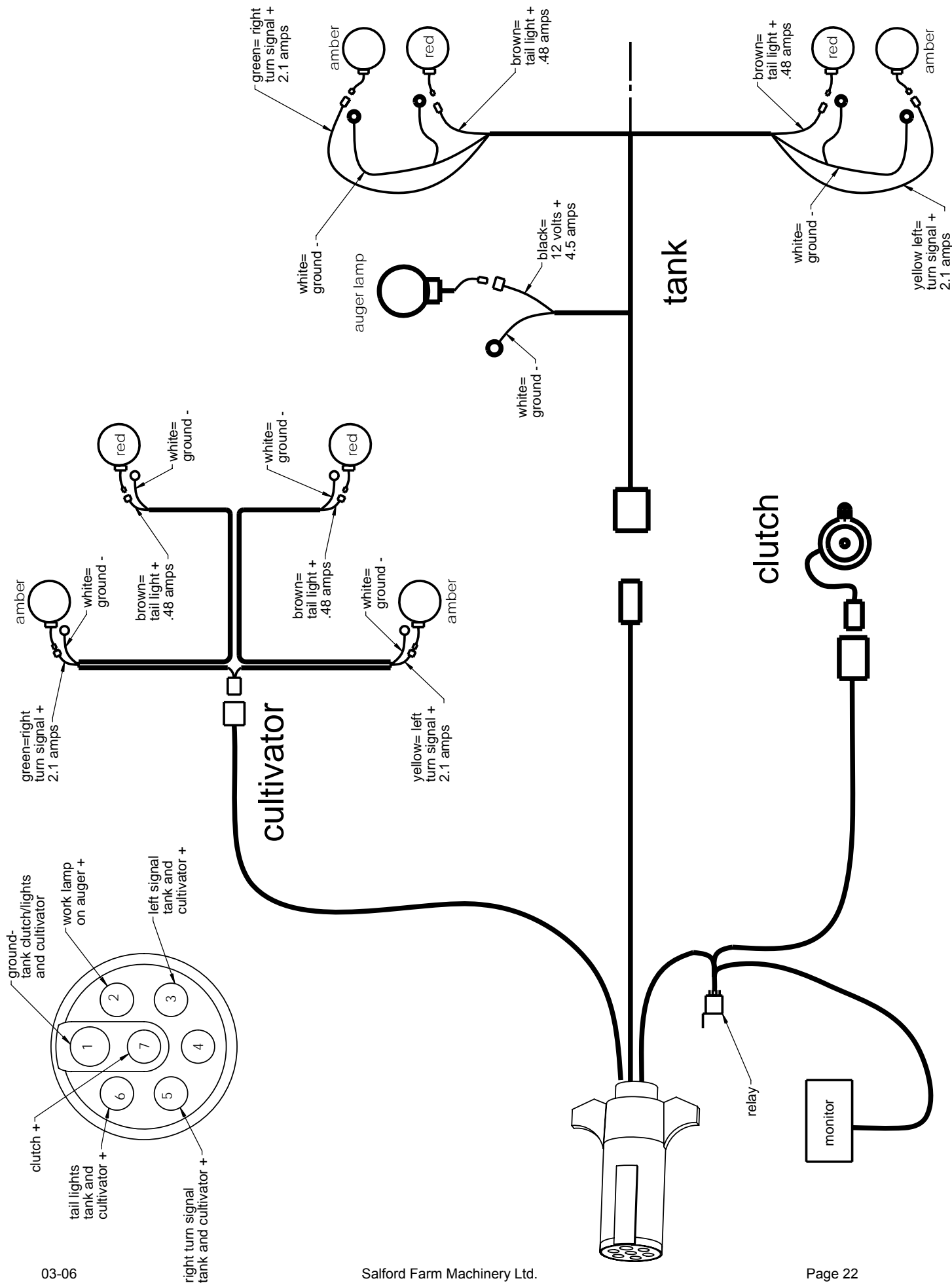


Fan motor (F11-10 shown).



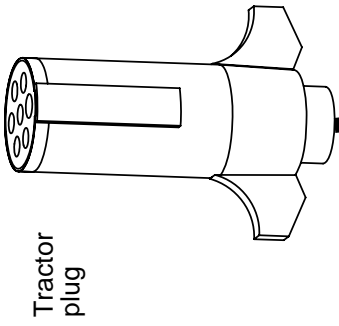
Fan motor schematic (left hand rotation shown).

# AIR SEEDER WIRING DIAGRAM

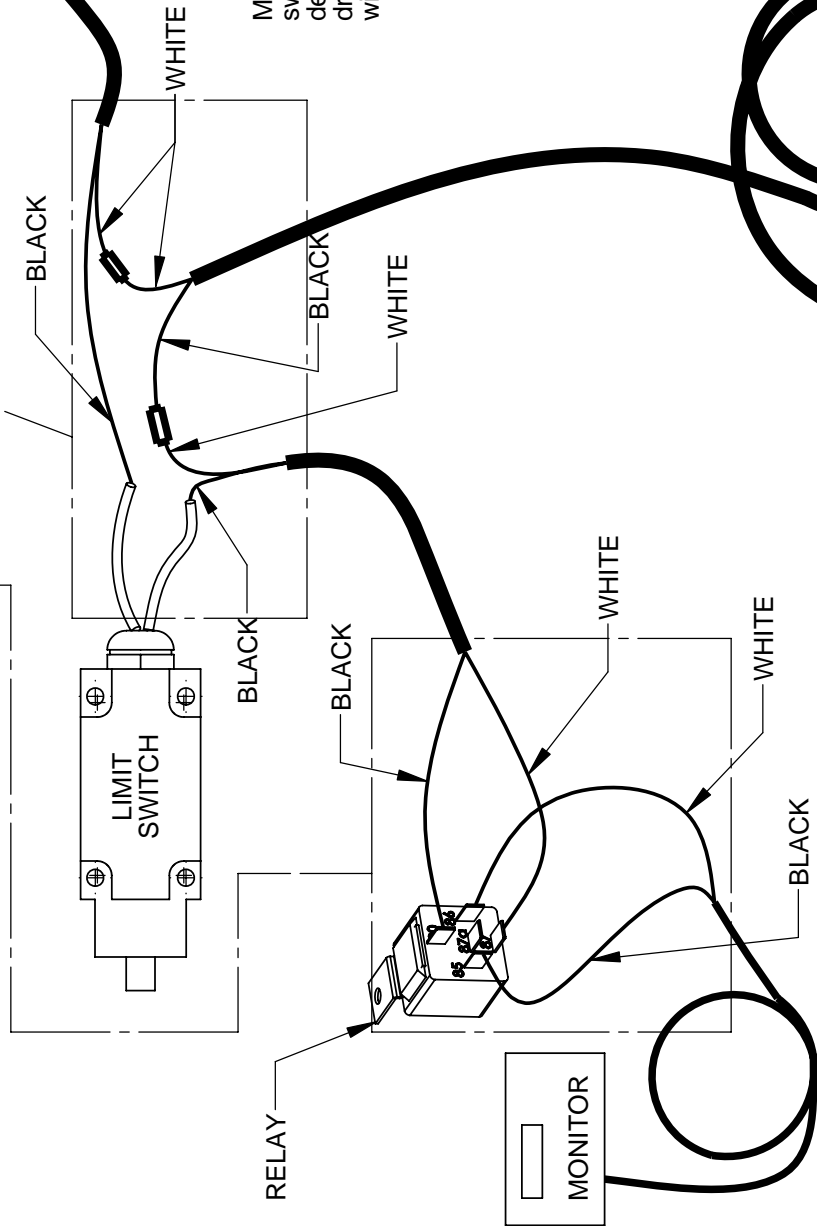




# RELAY WIRING INSTRUCTIONS



Mount relay to back of limit switch mounting bracket (see depth control installation drawing for details). Ensure wires are pointing downwards.

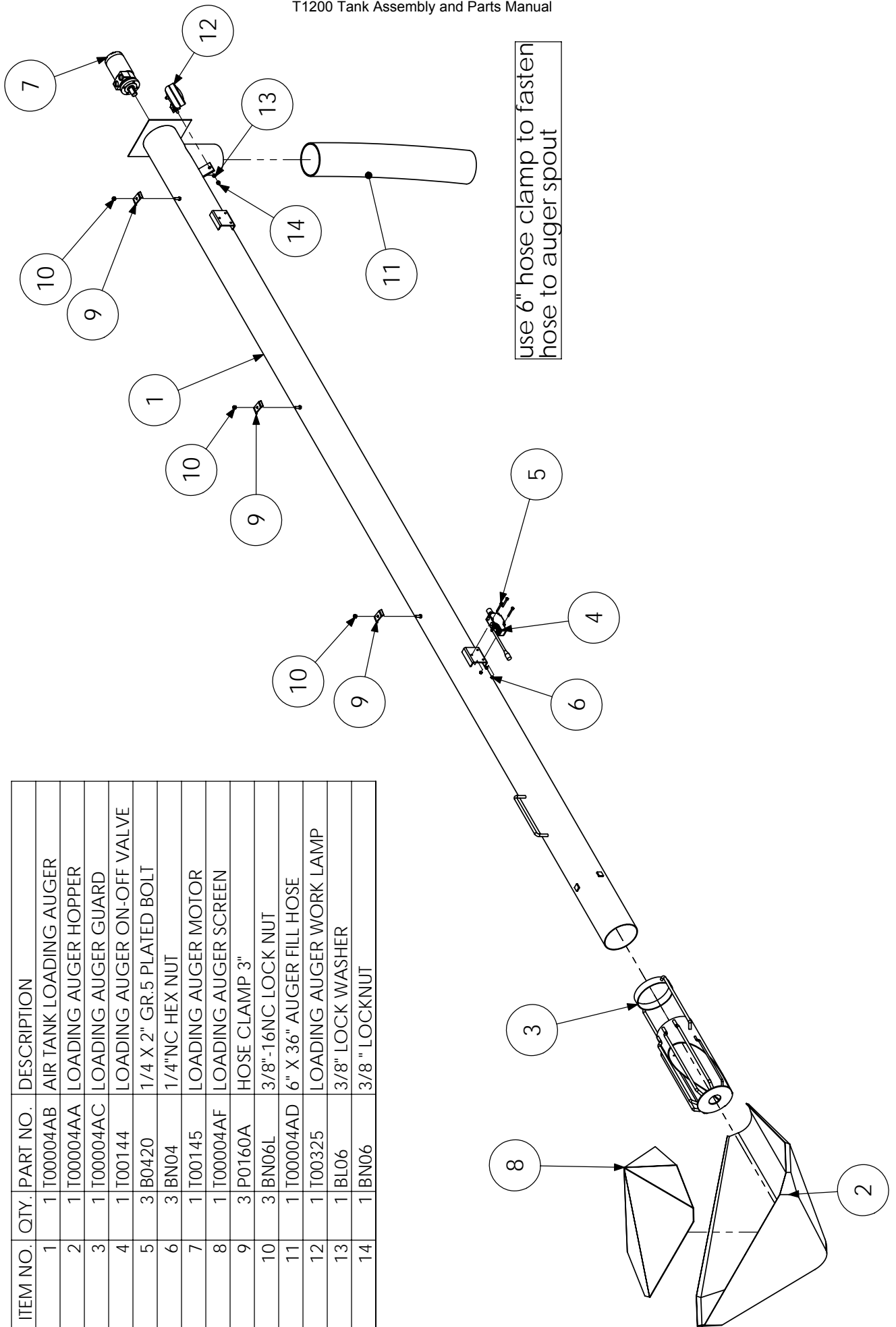


APPLY HEAT SHRINK AFTER WIRES ARE CONNECTED

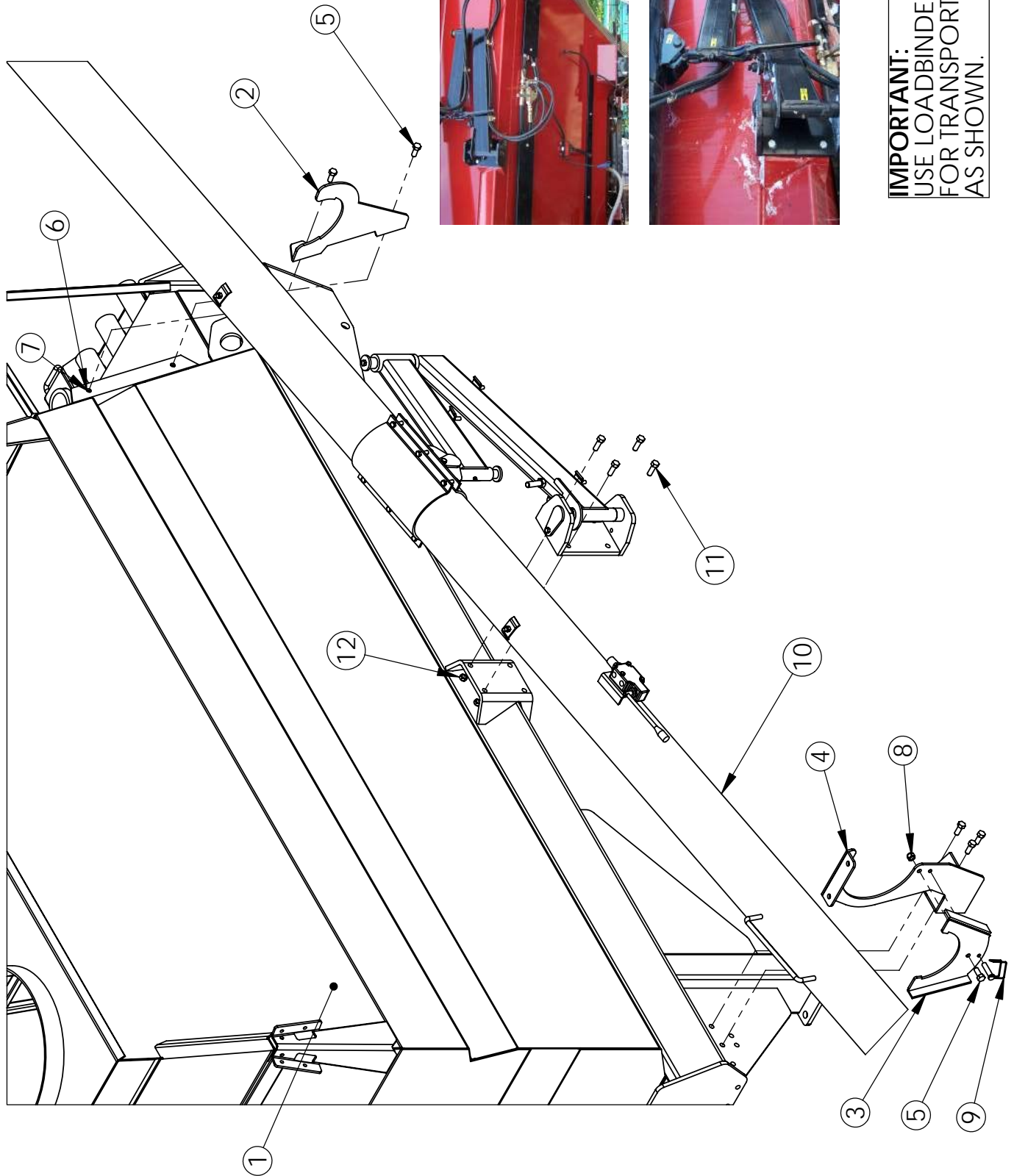


# LOADING AUGER ASSEMBLY

ITEM NO.	QTY.	PART NO.	DESCRIPTION
1	1	T00004AB	AIR TANK LOADING AUGER
2	1	T00004AA	LOADING AUGER HOPPER
3	1	T00004AC	LOADING AUGER GUARD
4	1	T00144	LOADING AUGER ON-OFF VALVE
5	3	B0420	1/4 X 2" GR.5 PLATED BOLT
6	3	BN04	1/4"NC HEX NUT
7	1	T00145	LOADING AUGER MOTOR
8	1	T00004AF	LOADING AUGER SCREEN
9	3	P0160A	HOSE CLAMP 3"
10	3	BN06L	3/8"-16NC LOCK NUT
11	1	T00004AD	6" X 36" AUGER FILL HOSE
12	1	T00325	LOADING AUGER WORK LAMP
13	1	BL06	3/8" LOCK WASHER
14	1	BN06	3/8" LOCKNUT



# LOADING AUGER INSTALLATION



**IMPORTANT:**  
USE LOADBINDER  
FOR TRANSPORT  
AS SHOWN.

## LOADING AUGER INSTALLATION

ITEM NO.	QTY.	PART NO.	DESCRIPTION
1	1	T12500	TANK WELDMENT
2	1	T00331AR	FRONT AUGER REST
3	1	T00331AP	REAR AUGER LOCK
4	1	T00331AQ	REAR AUGER REST/ LIGHT BRACKET
5	6	B0812	1/2" x 1 1/4" HEX BOLT
6	2	BL08	1/2" SPRING WASHER
7	2	BN08	1/2" HEX NUT NC
8	4	BN08L	1/2" NYLOCK NUT NC
9	1	T00331AS	LOADING AUGER LOCKING PIN
10	1	T00331	AUGER ASSEMBLY
11	4	B0815	1/2" x 1 1/2" HEX BOLT
12	4	BN08S	1/2"-13NC STOVER LOCK NUT

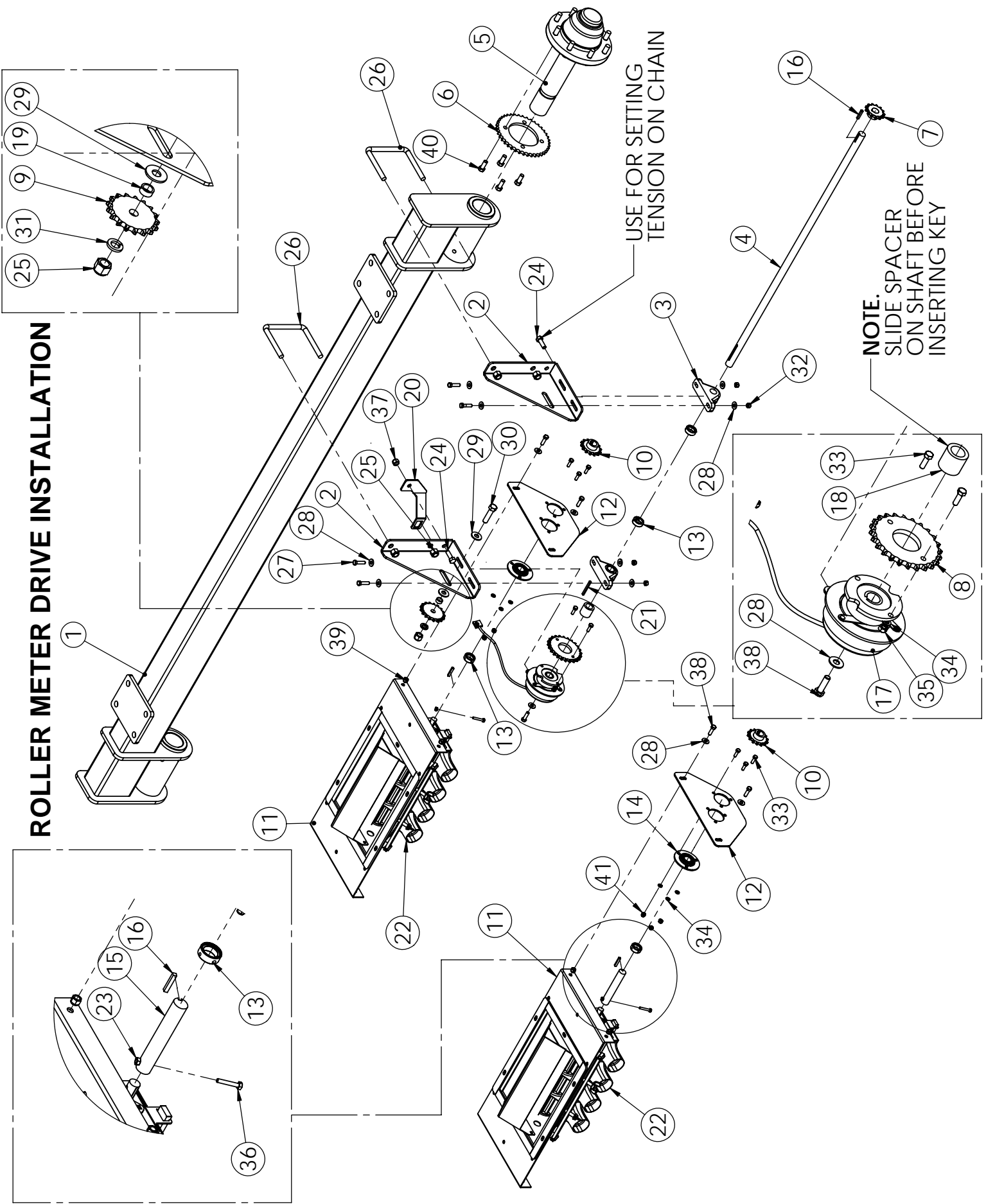


## LOADING AUGER ARM ASSEMBLY

ITEM NO.	QTY.	PART NO.	DESCRIPTION
1	1	T00331AA	AIR TANK AUGER ARM MOUNT
2	1	T00331AB	LOWER AUGER ARM
3	2	T00331AC	AIR TANK LOADING AUGER SPACER
4	1	T00331AL	AIR TANK UPPER AUGER ARM
5	1	T00331AE	9" LOADING AUGER ARM PIN
6	4	B0610	3/8 X 1" PLATED BOLT GR.5
7	1	T00331AF	LOADING AUGER PIVOT PIN
8	1	T00331AG	LOADING AUGER ARM STRAP
9	1	T00331AH	AIR TANK LOADING AUGER PIN
10	2	T00331AT	1/4" X 1/4" THICK FLAT WASHER
11	4	GF641	1/4"-28NF GREASE FITTING
12	1	T00331AO	LOADING AUGER STRAP
13	6	B0620	3/8"NC x 2" LG. HEX BOLT
14	6	BN06L	3/8 " LOCKNUT
15	1	T00004	AIR TANK LOADING AUGER ASSEMBLY
16	3	P0160A	HOSE CLAMP 3"
17	3	BN06L	3/8"-16NC LOCK NUT
18	4	BL06	3/8" LOCK WASHER

1. INSTALL AUGER ARM MOUNT(1) ONTO TANK, ALIGN SPACERS(3) WITH LOWER AUGER ARM HOLES(2), SLIDE 9" PIN(5) THROUGH SPACERS (3) AND LOWER AUGER ARM (2), THEN TIGHTEN WITH 3/8 X 1" BOLT(6), AND WASHER(18),
2. SLIDE UPPER AUGER ARM(4) ONTO SHAFT OF LOWER AUGER ARM(2) AND PLACE WASHER(10) ON SHAFT AND RETAIN WITH 3/8 X 1" BOLT(6) AND WASHER(18)
3. SLIDE PIVOT PIN(7) INTO PIPE ON UPPER AUGER ARM(4) AND PLACE WASHER(10) AND RETAIN WITH 3/8 X 1" BOLT(6) AND WASHER(18).
4. ALIGN AUGER STRAP(8) HOLES WITH PIPE ON PIVOT PIN(7) AND SLIDE 4" PIN (9) INTO AUGER STRAP (8) AND TIGHTEN WITH 3/8 X 1" BOLT (6).
5. PLACE AUGER (15) INSIDE STRAP (8) AND DIMENSION AS SHOWN IN PICTURE, PLACE TOP STRAP (12), ALIGN HOLES AND INSERT BOLTS (13) THROUGH HOLES AND ATTACH NUTS (14) AND TIGHTEN.
6. RETAIN ALL HOSE CLAMPS (16) WITH 3/8" LOCKNUTS AND LEAVE LOOSE FOR HOSE ROUTING.
7. PUT GREASE FITTINGS IN HOLES AS SHOWN AND GREASE.

# ROLLER METER DRIVE INSTALLATION





## ROLLER METER DRIVE INSTALLATION

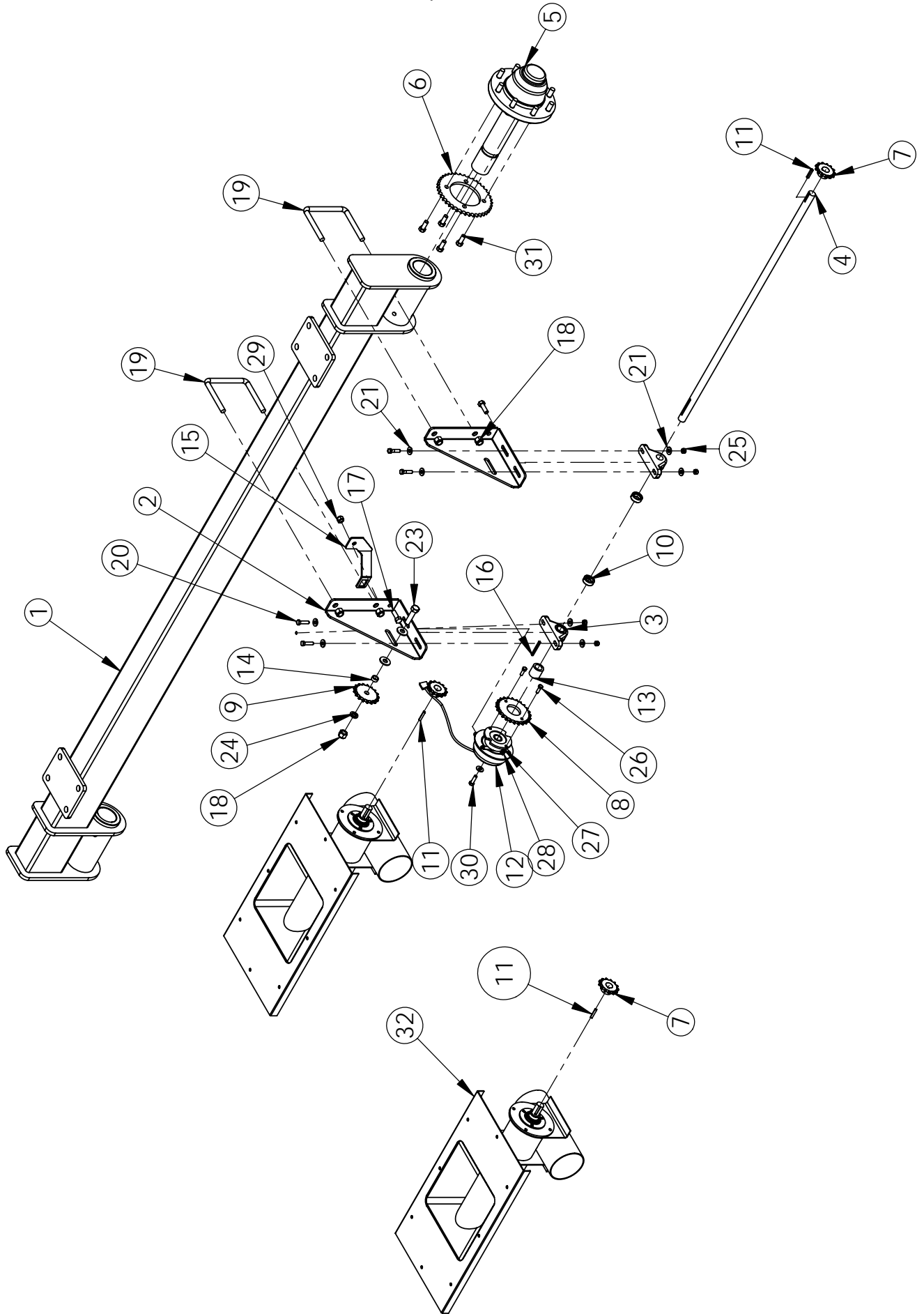
ITEM NO.	QTY.	PART NO.	DESCRIPTION
1	1	T12130	REAR TANK AXLE
2	2	T12922	REAR AXLE BEARING SUPPORT INNER
3	2	T12924	1" PILLOW BLOCK BEARING
4	1	T12930	1 X 43" SHAFT
5	1	GW8000MK	8000 HUB ASSEMBLY
6	1	50BS40	#50 BS 40 TOOTH SPROCKET
7	1	50BS13	#50 BS 13 TOOTH SPROCKET
8	1	50BS24	#50 BS 24 TOOTH CLUTCH BOLT ON SPROCKET
9	1	50BS17	#50 BS 17 TOOTH SPROCKET IDLER
10	2	50BS14	#50 BS 14 TOOTH SPROCKET
11	2	T12915	4 OUTLET ADAPTER PLATE
12	2	T12931	4 ROLLER SIDE BEARING SUPPORT
13	4	T12942	1" BEARING LOCKING COLLAR
14	2	T12941	1" LOCKING COLLAR BEARING
15	2	T12932	4 ROLLER SHAFT EXTENSION
16	3	t12933	1/4 X 1 1/2" KEY
17	1	T00017	ELECTRIC CLUTCH ASSEMBLY
18	1	T12934	1" ID X 1 7/16" CLUTCH SPACER
19	1	T12940	CLUTCH SUPPORT
20	1	T12939	3/16 X 1/4 X 2 1/2" CLUTCH KEY
21	2	T00307	4 OUTLET SEED/FERT. FEEDER
22	2	B0815	1/2" x 1 1/2" HEX BOLT
23	5	BN10L	5/8" NYLOCK NUT NC
24	2	BU1061	U-BOLT 5/8" x 6" x 5 1/2"
25	4	B0615-B	3/8 X 1 1/2" BOLT
26	13	BF06	3/8" FLATWASHER
27	2	BF10HS	5/8" FLAT WASHER
28	1	B1025	5/8 X 2 1/2" GR.5 PLATED BOLT
29	1	BF10	5/8" LOCKWASHER
30	4	BN06L	3/8 " LOCKNUT
31	8	B0510	5/16"NC x 1" HEX BOLT
32	8	BL05	5/16" LOCKWASHER
33	2	BN05	5/16" HEX NUT
34	2	B0415	1/4" NC x 1 1/2" HEX BOLT
35	1	BN08L	1/2" NYLOCK NUT NC
36	5	B0612	3/8 x 1 1/4" BOLT
37	4	BN06L	3/8"-16NC LOCK NUT
38	4	B0812F	1/2 X 1 1/4" NF HEX BOLT
39	6	BN05L	5/16" LOCK NUT
41	2	BN04L	1/4" LOCK NUT
19	1	T12936	11/16 X 3/8" PIPE SPACER

## ROLLER METER DRIVE INSTALLATION

1. Before installing tire on hub, install bearing support(2) for meter drive and, leave bolts loose for later adjustment.
2. After installing bearing support(2), install tire with sprocket on hub and rest tank on tires.
3. Slide bearing locking collars (13) on shaft (4) both with the groove facing out to bearing, then slide pillow block bearing (3) on shaft making sure the locking faces are facing in towards bearings, insert key into slot and slide 13 tooth sprocket(7) on shaft at the short keyway end, make sprocket flush with shaft, Align bearing up with slotted holes on bearing supports and retain with 3/8 x 1 1/2" bolts (24) and washers(28) loose to align once everything is in place.
4. Install chain tensioner on bearing support in slotted hole with 3/8" spacer (19) in between washers (29) and sprocket (9) and retain with 5/8 x 2 1/2" bolts, do not tighten at this time for further adjustment to tension chain.
5. Slide spacer (18) on shaft (4) as shown in picture, followed by the clutch assembly with sprocket attached (17) and retain with washer and 3/8 x 1 1/4" bolt (38), install clutch stopper(20) onto bearing support (2), with clutch stopper in slot (clutch assembly), retain with 1/2 x 1 1/2" bolt (25) and 1/2" locknut(37).
6. Install side bearing support(12) onto 4 outlet adapter plate (11) and retain with 3/8 x 1 1/4" bolts and 3/8 flat washers(28), install bearing (14) on inside of the plate and retain with 5/16 x 1" (33) bolts and nuts(41) and washers(34), slide shaft extension(15) into bearing(14), slide locking collar (13) on shaft extension(15) and slide on roller meter shaft (22) and lock with 1/4" x 2" bolt and nut(23), tighten bearing locking collar as shown in previous pages, install 1/4" key (16) in groove of shaft extension (15), install 14 tooth sprocket (10) and tighten set screw with allen wrench.



# AUGER METER DRIVE INSTALLATION

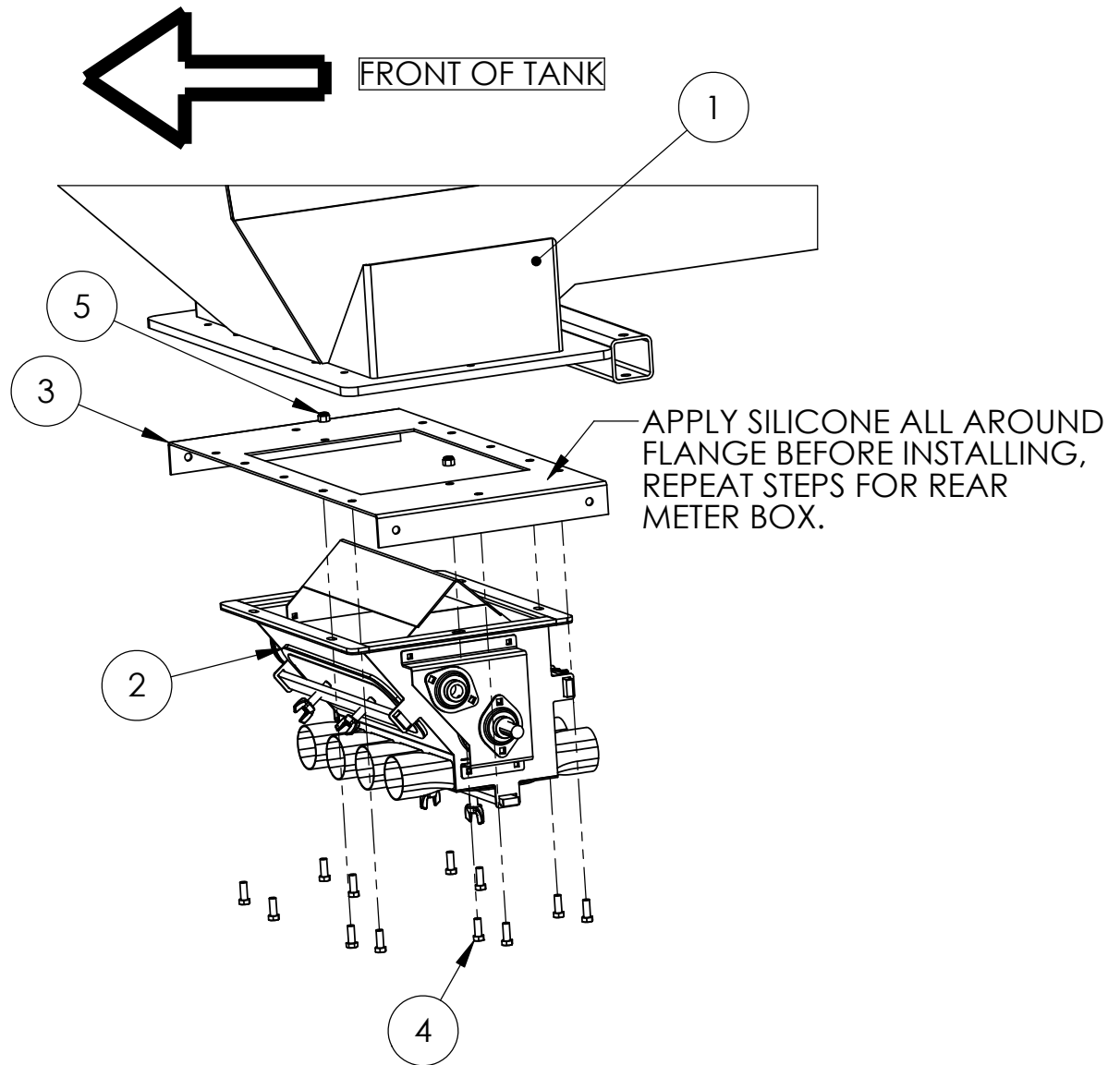


## AUGER METER DRIVE INSTALLATION

ITEM NO.	QTY.	PART NO.	DESCRIPTION
1	1	T12130	REAR TANK AXLE
2	2	T12922	REAR AXLE BEARING SUPPORT INNER
3	2	T12924	1" PILLOW BLOCK BEARING
4	1	T12954	1 X 45" SHAFT
5	1	GW8000MK	8000 HUB ASSEMBLY
6	1	50BS40	#50 BS 40 TOOTH SPROCKET
7	3	50BS13	#50 BS 13 TOOTH SPROCKET
8	1	50BS24	#50 BS 24 TOOTH CLUTCH BOLT ON SPROCKET
9	1	50BS17	#50 BS 17 TOOTH SPROCKET IDLER
10	2	T12942	1" BEARING LOCKING COLLAR
11	3	t12933	1/4 X 1 1/2" KEY
12	1	T00017	ELECTRIC CLUTCH ASSEMBLY
13	1	T12934	1" ID X 1 7/16" CLUTCH SPACER
14	1	T12936	1 1/16 X 3/8" PIPE SPACER
15	1	T12940	CLUTCH SUPPORT
16	1	T12939	3/16 X 1/4 X 2 1/2" CLUTCH KEY
17	2	B0815	1/2" x 1 1/2" HEX BOLT
18	5	BN10L	5/8" NYLOCK NUT NC
19	2	BU1061	U-BOLT 5/8" x 6" x 5 1/2"
20	4	B0615-B	3/8 X 1 1/2" BOLT
21	9	BF06	3/8" FLATWASHER
22	2	BF10HS	5/8" FLAT WASHER
23	1	B1025	5/8 X 2 1/2" GR.5 PLATED BOLT
24	1	BF10	5/8" LOCKWASHER
25	4	BN06L	3/8 " LOCKNUT
26	2	B0510	5/16"NC x 1" HEX BOLT
27	2	BL05	5/16" LOCKWASHER
28	2	BN05	5/16" HEX NUT
29	1	BN08L	1/2" NYLOCK NUT NC
30	1	B0612	3/8 x 1 1/4" BOLT
31	4	B0812F	1/2 X 1 1/4" NF HEX BOLT
32	2	T00320	AUGER METERING UNIT

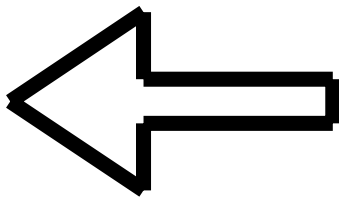
## ROLLER METER BOX INSTALLATION

ITEM NO.	QTY.	PART NO.	DESCRIPTION
1	1	T12500	TANK WELDMENT
2	1	T00307	4 OUTLET ROLLER METER
3	1	T12915	4 OUTLET ADAPTER PLATE
4	12	B0610	3/8" X 1" LG. GRADE 5
5	2	BN06L	3/8"-16NC LOCK NUT

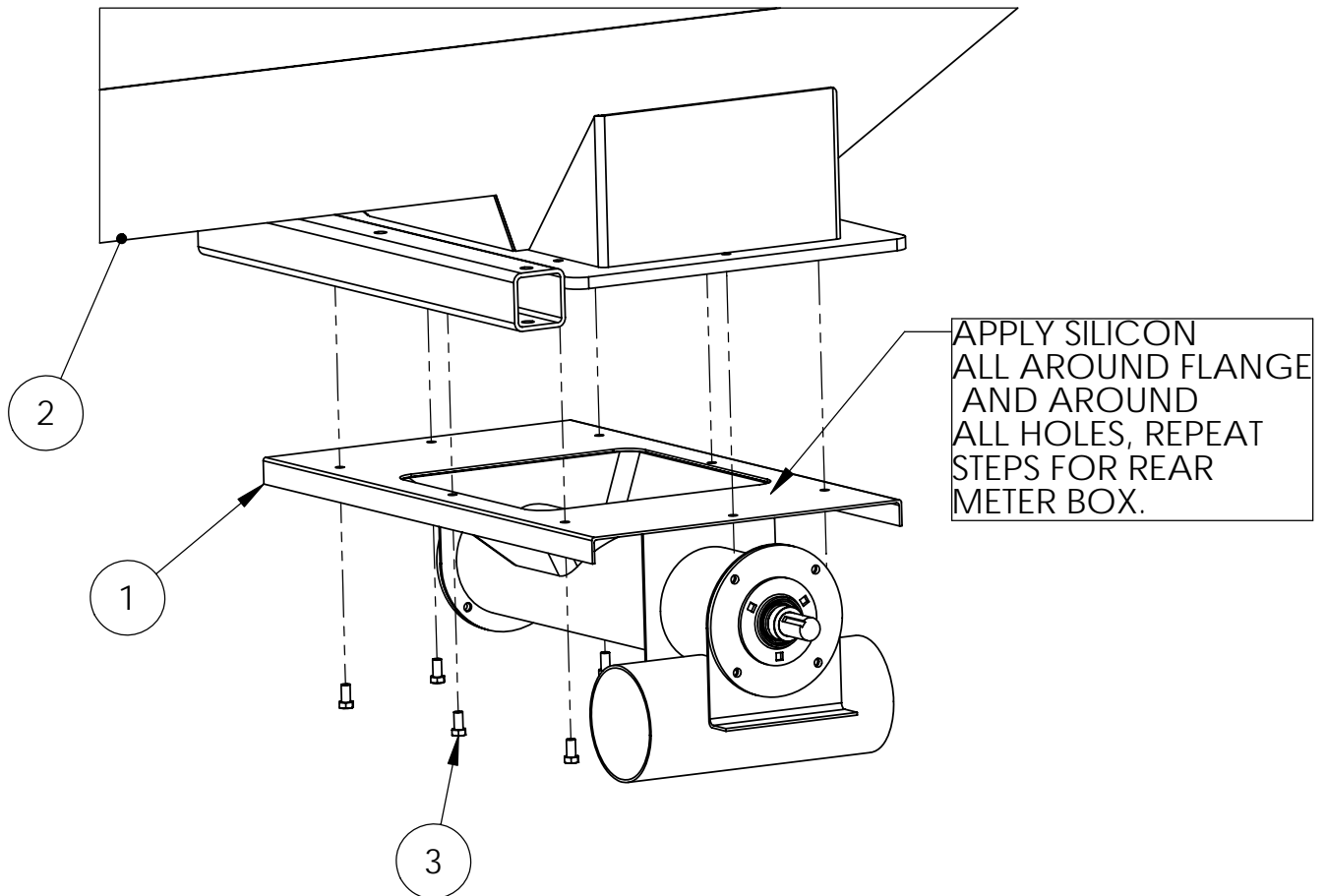


## AUGER METER INSTALLATION

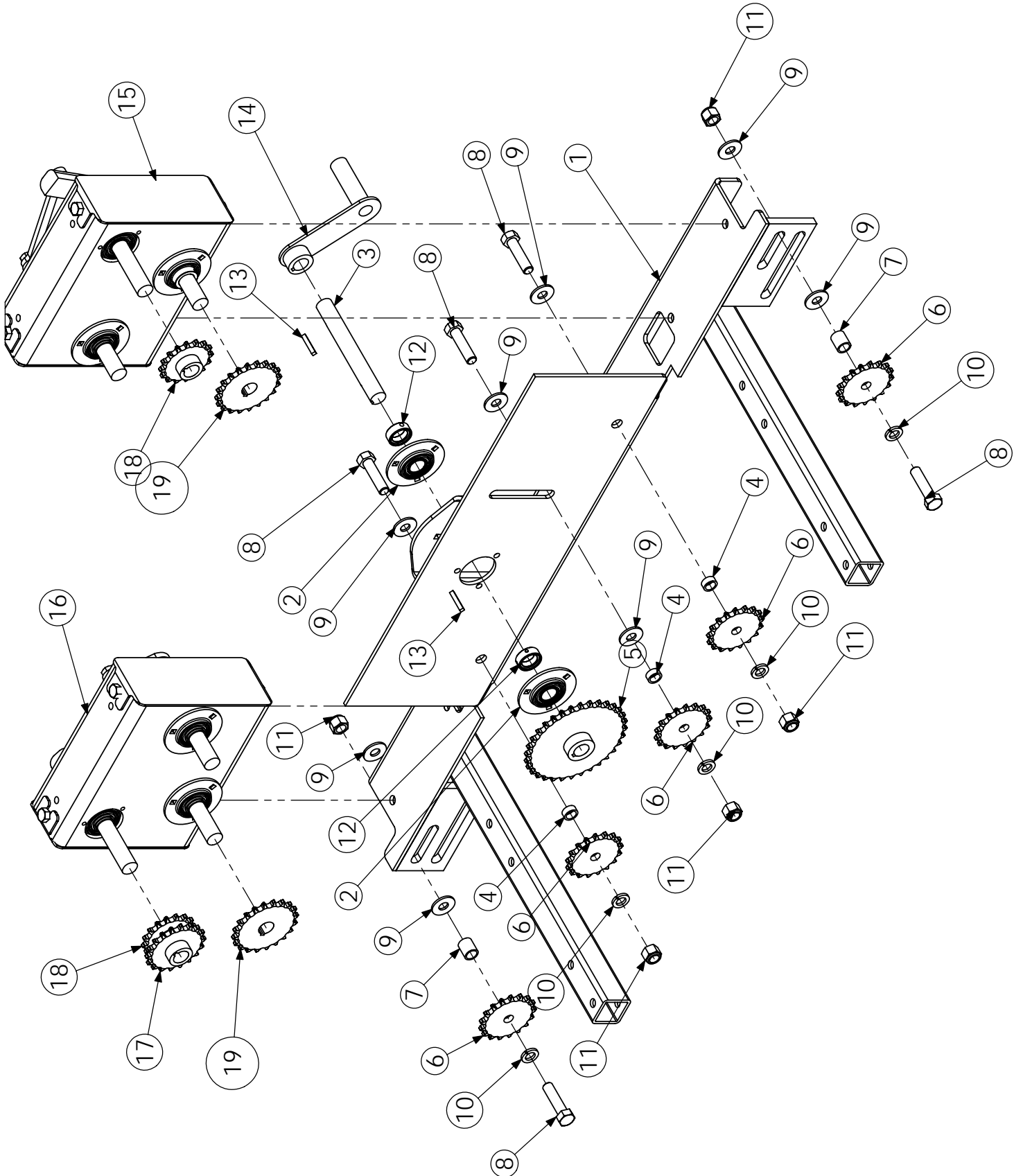
ITEM NO.	QTY.	PART NO.	DESCRIPTION
1	1	T00320	AUGER METERING UNIT
2	1	T12500	TANK WELDMENT
3	8	B0607	3/8" X 1" LG. GRADE 5



FRONT OF TANK



VARIABLE SPEED METER BOX ASSEMBLY



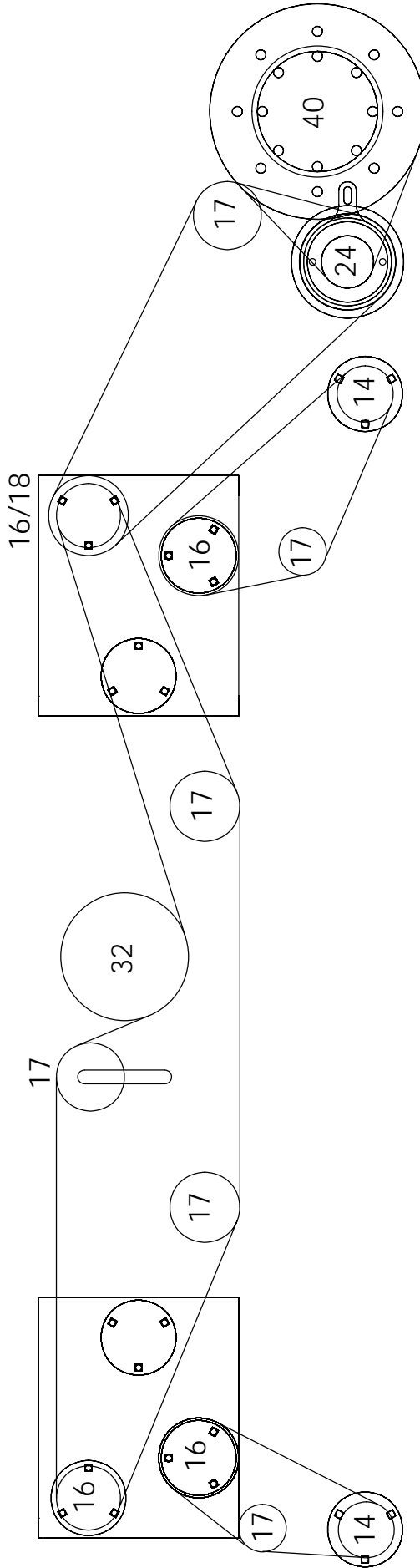


## VARIABLE METER BOX INSTALLATION

ITEM NO.	QTY.	PART NO.	DESCRIPTION
1	1	T12910	TANK METER BOX SLIDER
2	2	T12941	1" LOCKING COLLAR BEARING
3	1	T12935	1 X 8" SHAFT
4	3	T12936	11/16 X 3/8" PIPE SPACER
5	1	50BS32	#50 BS 32 TOOTH SPROCKET
6	5	50BS17	#50 BS 17 TOOTH SPROCKET IDLER
7	2	T12938	11/16 X 1" SPACER
8	5	B1025	5/8 X 2 1/2" GR.5 PLATED BOLT
9	8	BF10HS	5/8" FLAT WASHER
10	5	BF10	5/8" LOCKWASHER
11	5	BN10L	5/8" NYLOCK NUT NC
12	2	T12942	1" BEARING LOCKING COLLAR
13	2	t12933	1/4 X 1 1/2" KEY
14	1	T12937	CALIBRATION HANDLE
15	1	T00357F	FRONT ADJUSTABLE METER BOX
16	1	T00357R	REAR ADJUSTABLE METER BOX
17	1	50BS18	50 BS 18 TOOTH SPROCKET
18	2	50BS16	#50 BS 16 TOOTH SPROCKET
19	2	50BS20	#50 BS 20 TOOTH SPROCKET

# ROLLER CHAIN DIAGRAM

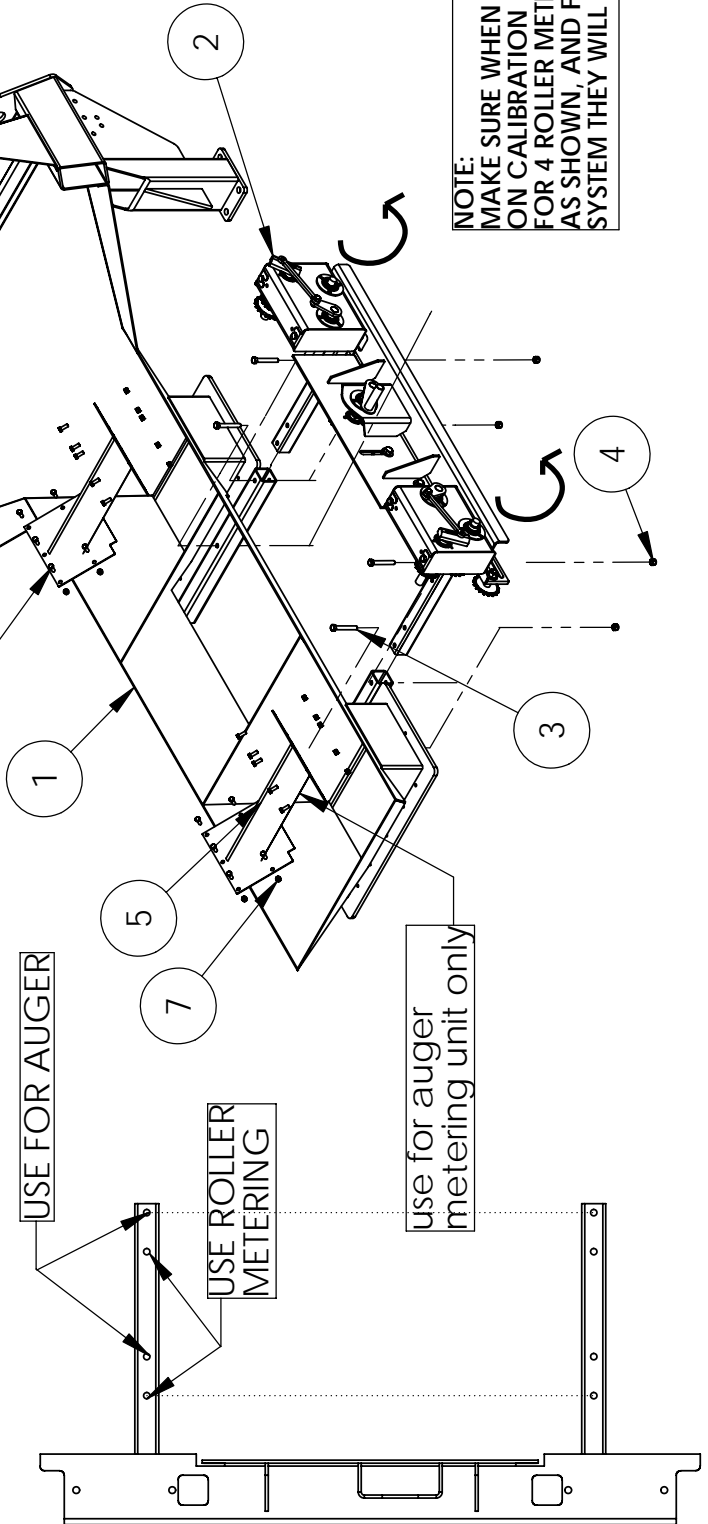
NUMBERS INDICATE NUMBER OF TEETH PER SPROCKET





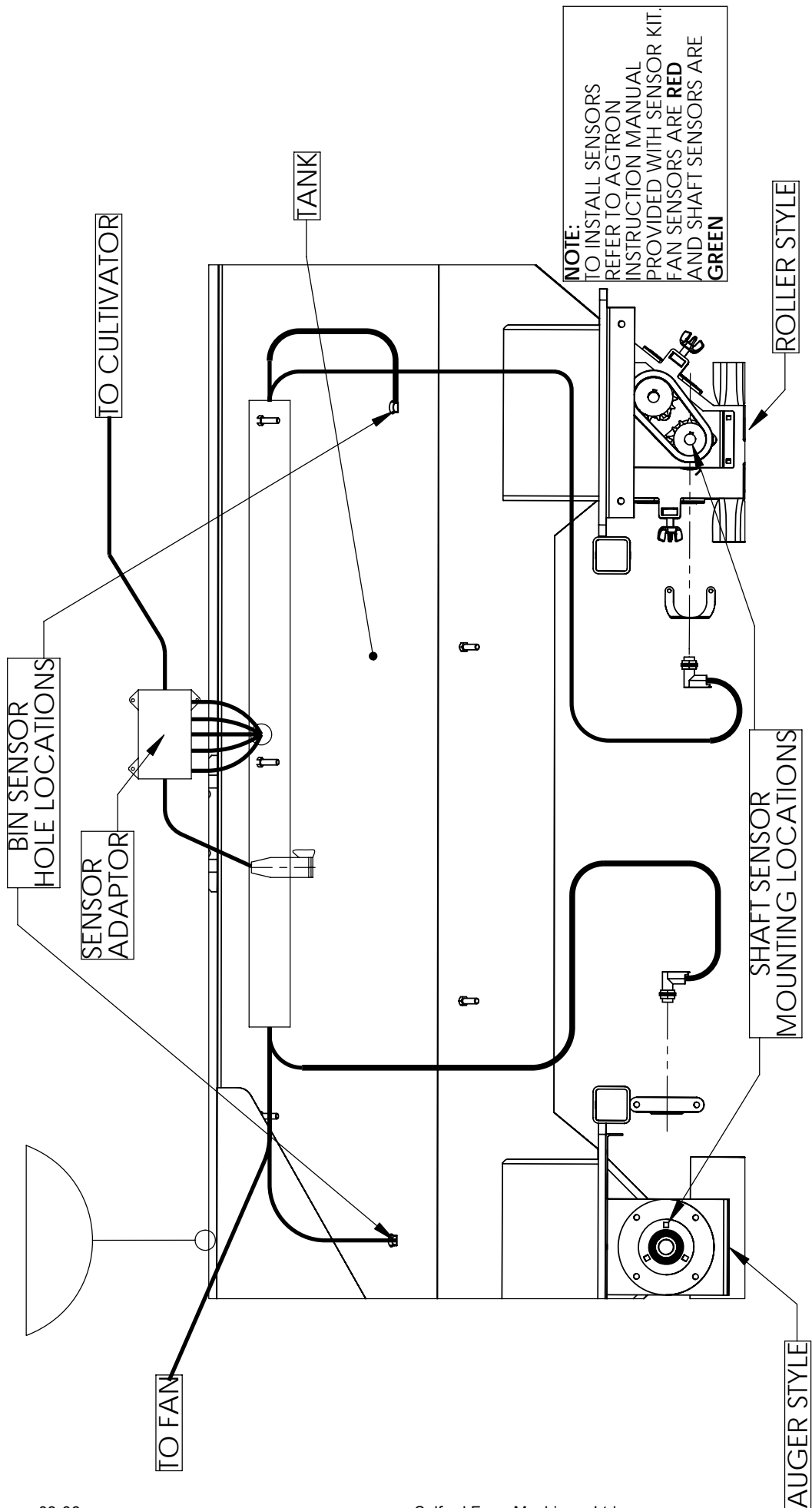
# VARIABLE METER BOX INSTALLATION

ITEM NO.	QTY.	PART NO.	DESCRIPTION
1	1	T12500	TANK WELDMENT
2	1	T00315	VARIABLE METER BOX ASSEMBLY
3	4	B0835	1/2"-13NC x 3 1/2" LG. HEX BOLT GR. 9
4	4	BN08L	1/2" NYLOCK NUT NC
5	2	T00390	TANK SEED GAURD
6	20	B0610	3/8 X 1" PLATED BOLT GR.5
7	20	BN06L	3/8"-16NC LOCK NUT



**NOTE:**  
 MAKE SURE WHEN TURNING METER BOXES ON CALIBRATION HANDLE, OUTPUT SHAFTS FOR 4 ROLLER METERING UNITS ARE TURNING AS SHOWN, AND FOR AUGER STYLE METERING SYSTEM THEY WILL TURN OPPOSITE DIRECTION.

# SENSOR INSTALLATION



ROLLER STYLE SENSOR INSTALLATION



CRARY FAN SENSOR INSTALLATION



REM FAN SENSOR INSTALLATION



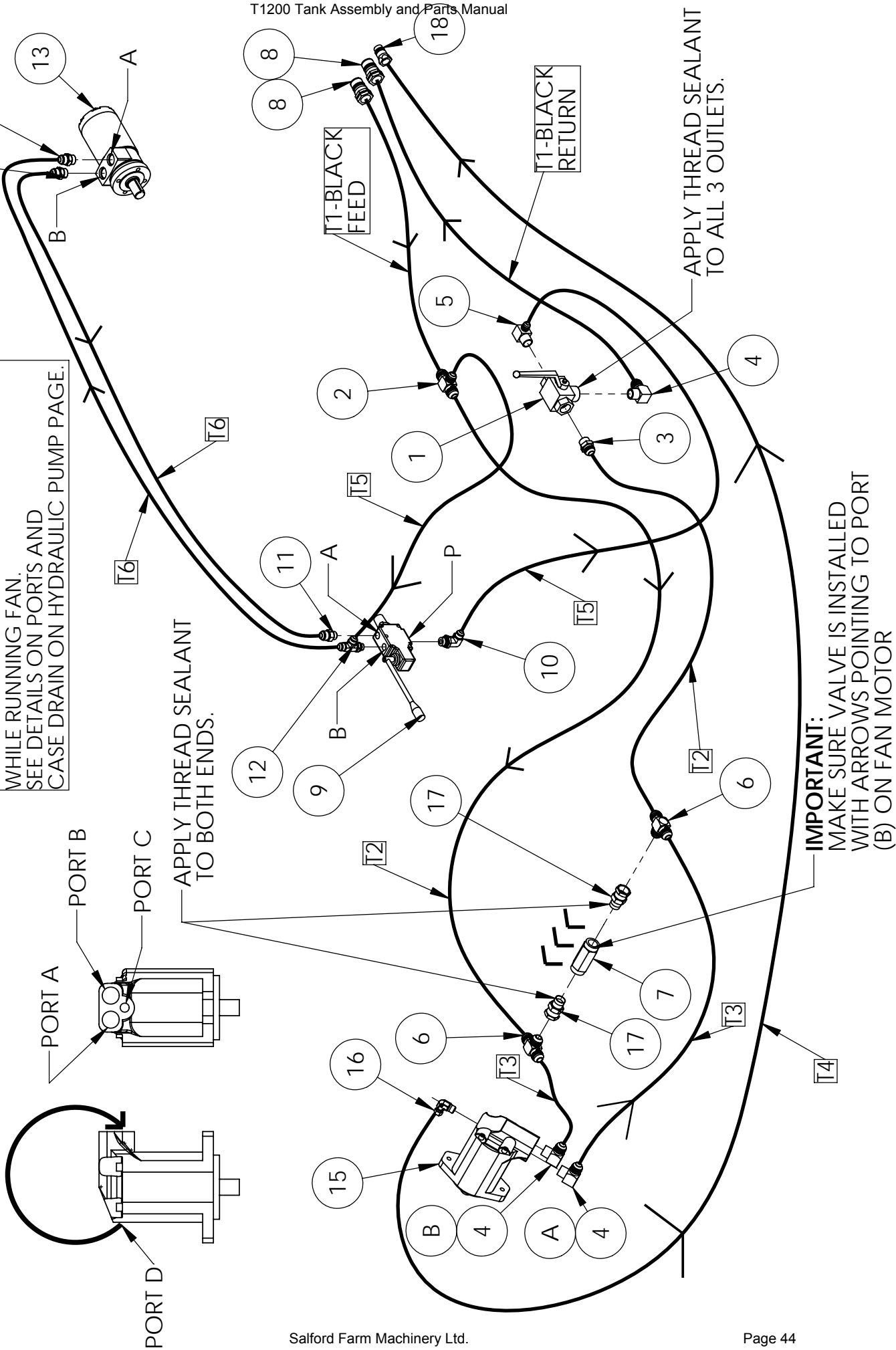
AUGER SENSOR INSTALLATION

# HYDRAULIC HOSE SCHEMATIC

**IMPORTANT:**  
MOVE STEEL PLUG  
FROM PORT D TO  
PORT C

○ = FITTING #  
□ = HOSE #

**IMPORTANT:**  
CASE DRAIN (T4) MUST BE PLUGGED INTO  
TRACTOR CASE DRAIN AT ALL TIMES  
WHILE RUNNING FAN.  
SEE DETAILS ON PORTS AND  
CASE DRAIN ON HYDRAULIC PUMP PAGE.



## T1200 TANK HYDRAULIC FITTING LIST

ITEM NO.	QTY.	PART NO.	DESCRIPTION
1	1	AELN3_4-11DB	3/4" 3 WAY-BALL VALVE
2	1	2603-12-12-8	-12 JIC -8 JIC -12 JIC ALL MALE TEE
3	1	2404-12-12	-06 ORB TO -06 NPT NIPPLE
4	3	2501-12-12	-12 JIC MALE - 3/4 NPT 90 DEG MALE ELBOW
5	1	2501-8-12	-8 JIC MALE - 3/4" NPT MALE 90 DEG ELBOW
6	2	2603-12-12-12	-12 JIC ALL MALE TEE
7	1	HSP-1000-6-5	3/4" NPT INLINE CHECK VALVE
8	2	H8010-5	3/4" NPT PIONEER MALE TIP
9	1	T00144	LOADING AUGER ON-OFF VALVE
10	1	6801-8-8NWO	-8JIC MALE -8 O-RING MALE 90 DEG ELBOW
11	1	6400-8-8-0	-8JIC MALE -8 ORING MALE
12	1	6804-8-8-8NW0	-8 JIC -8 ORING -8 JIC ALL MALE TEE
13	1	T00145	LOADING AUGER MOTOR
14	2	6400-8-10-0	-8 JIC MALE -10 ORING MALE
15	1	T00006	T1200 FAN MOTOR
16	1	H940566	3/8 NPT FEMALE 90 DEG SWIVEL-3/8 NPT MALE ELBOW
17	2	6505-12-12	-12JIC SWIVEL FEMALE -12 NPT MALE
18	1	H80104P	1/2" NPT MALE PIONEER COUPLER

### T1200 TANK Hose Kit

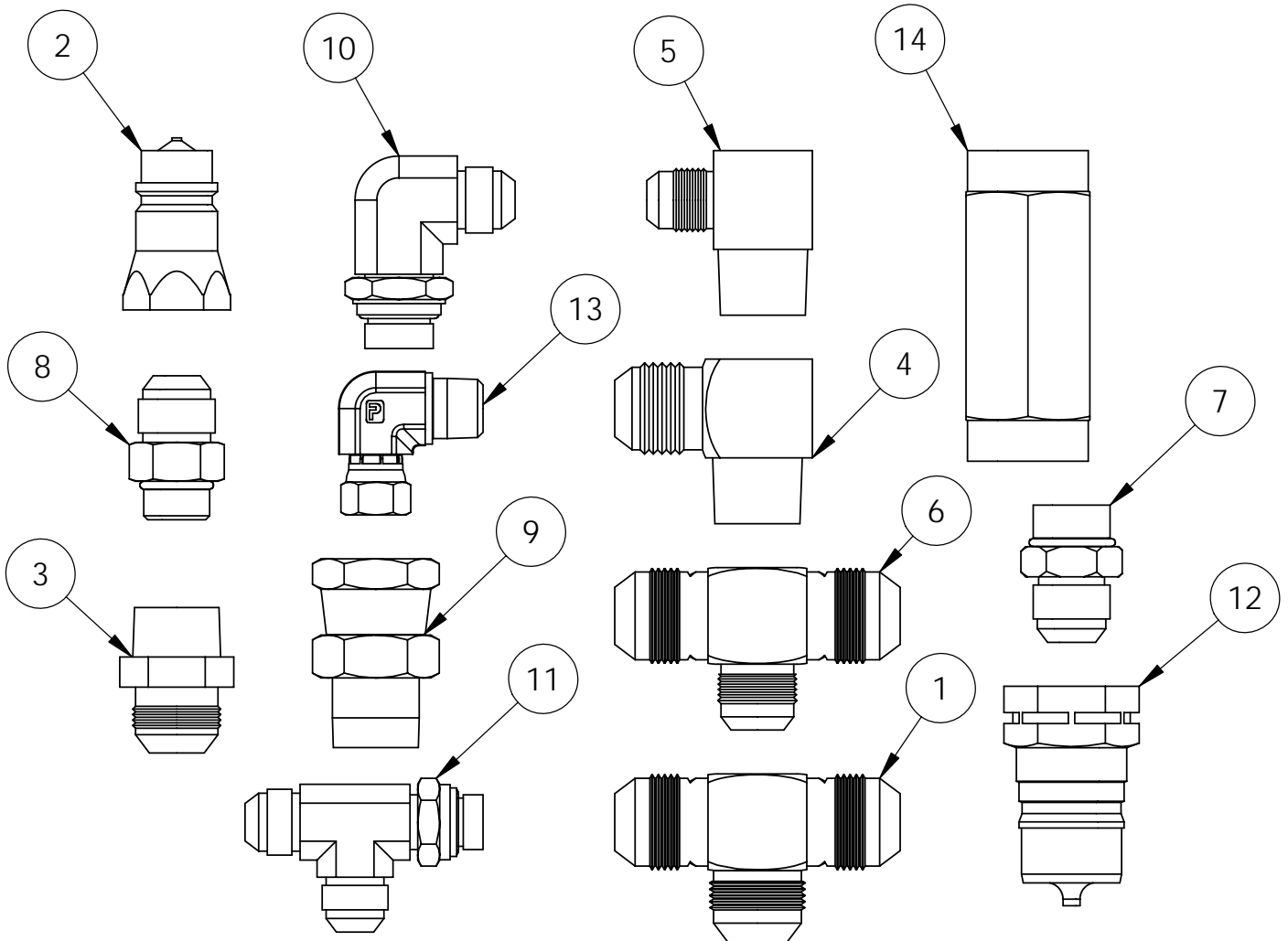
SIZE	LENGTH	QTY.	ENDS	HOSE #		WHERE USED
3/4"	18'3"	2	3/4" npt -12jic	T1-Black	TANK	HITCH - TEE (Feed & RETURN)
3/4"	*6' 9"	2	-12jic -12jic	T2	TANK	TEE - MOTOR (Feed & Return)
3/4"	*1' 9"	2	-12jic -12jic	T3	TANK	MOTOR - CHECK VALVE
3/8"	27'3"	1	1/2" npt - 3/8" npt	T4	TANK	MOTOR CASE DRAIN - HITCH
3/8"	14'	2	- 8jic - 8jic	T5	TANK	BALL VALVE TO AUGER ON/OFF VALVE
3/8"	13'	2	- 8jic - 8jic	T6	TANK	AUGER ON/OFF VALVE - AUGER MOTOR



ROUTE HOSES AND ELECTRIC WIRE THRU HOSE CLAMPS AND LOOP AS SHOWN TO AVOID RIPPING OR PINCHING HOSE WHEN USING LOADING AUGER.

## HYDRAULIC FITTING DESCRIPTION

ITEM NO.	PART NO.	DESCRIPTION
1	2603-12-12-12	-12 JIC ALL MALE TEE
2	H80104P	1/2" NPT MALE PIONEER COUPLER
3	2404-12-12	-06 ORB TO -06 NPT NIPPLE
4	2501-12-12	-12 JIC MALE - 3/4" NPT 90 DEG MALE ELBOW
5	2501-8-12	-8 JIC MALE - 3/4" NPT MALE 90 DEG ELBOW
6	2603-12-12-8	-12 JIC -8 JIC -12 JIC ALL MALE TEE
7	6400-8-10-0	-8 JIC MALE -10 ORING MALE
8	6400-8-8-0	-8JIC MALE -8 ORING MALE
9	6505-12-12	-12JIC SWIVEL FEMALE -12 NPT MALE
10	6801-8-8NW0	-8JIC MALE -8 O-RING MALE 90 DEG ELBOW
11	6804-8-8-8NW0	-8 JIC -8 ORING -8 JIC ALL MALE TEE
12	H8010-5	3/4" NPT PIONEER MALE TIP
13	H940566	3/8 NPT FEMALE 90 DEG SWIVEL-3/8 NPT MALE ELBOW
14	HSP-1000-6-5	3/4" NPT INLINE CHECK VALVE





# AIR HOSE ROUTING

